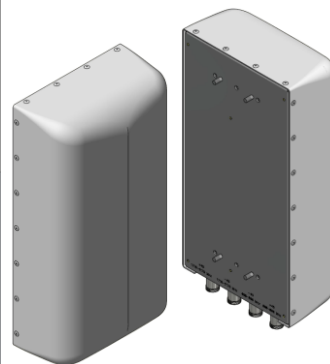


## X7CAP-265

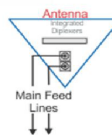
X-Pol Dual Band Antenna, 698-896/1695-2180 MHz,  
24.3", 65° H-Beam

- Fixed Tilt Antenna
- Suitable for LTE/CDMA/UMTS/GSM
- Optional Internal Diplexers



### Available with Integrated Diplexers

- Reduces mainline cables
- Eliminates external tower devices



## ELECTRICAL SPECIFICATIONS

Frequency Band, MHz	698-896	1695-1880	1880-1990	1990-2180
Horizontal Beamwidth, 3dB points	67°	57.5°	57°	53°
Gain, dBi	10.6	14.6	15.0	15.5
Vertical Beamwidth, 3dB points	35.7°	16.2°	14.6°	14.1°
Front-to-Back at 180°, dB	>27 dB	>27 dB		
Polarization	+/-45°	+/-45°		
Electrical Down Tilt	0°	0°		
VSWR/Return Loss, dB, Maximum	1.5:1/14.0	1.5:1/14.0		
Isolation Between Ports, dB, Minimum	26	26		
Intermodulation (2x20w), IM3, dBc	-150	-150		
Impedance, ohms	50	50		
Maximum Power Per Connector, CW (w)	250	125		

## MECHANICAL SPECIFICATIONS

Dimensions, Length/Width/Depth	24.3/12.5/7.1 in. (616/319/180mm)
Connector (Quantity)	(2 or 4) 7-16 DIN Female
Connector Torque	220-265 lbf-in (23-30 N-m)
Connector Location	Bottom
Antenna Weight	13.2 lbs (6 kg)
Bracket Weight	14.0 lb. (6.4 kg)
Standard Bracket Kit	P/N 919017
Mechanical Downtilt Range	0-21°
Radome Material	High Strength Luran, UV Stabilized, ASTM D1925
Wind Survival	150 mph (241 km/h)
Front Wind Load @100mph	52.4 lbf (233.4 N) @100mph
Equivalent Flat Plate @ 100mph	1.04 sq-ft (c=2) @ 100mph

## ORDER INFORMATION

MODEL	DESCRIPTION
X7CAP-265-00-BOT	X-Pol dual band antenna with four bottom DIN connectors
X7CAP-265-00-IP-BT	X-Pol dual band antenna with two bottom DIN connectors and Integrated Diplexers