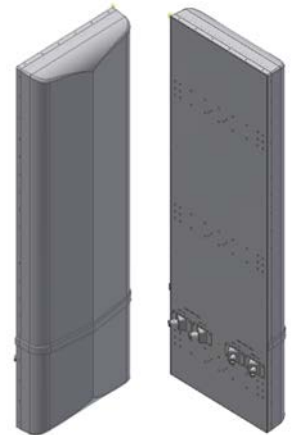


X7C-MB-634

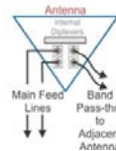
X-Pol Multi-Beam Antenna, 698-896MHz, 72", 34° H-Beam

- Sector Splitting Antenna
 - Forms 2 independent X Pol 30° Beam
 - High Isolation Between Beams
 - Ultra High Gain
 - Six Sector Site With 3 Antennas
- Optional Internal Diplexers



Available with Integrated Diplexers

- Reduces mainline cables
- Eliminates external tower devices



ELECTRICAL SPECIFICATIONS

Frequency Band, MHz	698-824	824-896
Horizontal Beamwidth, 3dB points	34°	34°
Gain, dBi	17.2	18.2
Vertical Beamwidth, 3dB points	11.0°	11.0°
Front-to-Back at 180°, dB	>28 dB	>28 dB
Polarization	+/-45°	
Electrical Downtilt	0°, 2°, 4° & 6°	
VSWR/Return Loss, dB, Maximum	1.5:1-14.0	
Isolation Between Ports, dB, Minimum	-30	
Intermodulation (2x20w), IM3, dBc	-150	
Impedance, ohms	50	
Maximum Power Per Connector, CW (w)	500	
Lightning Protection	DC Ground	

MECHANICAL SPECIFICATIONS

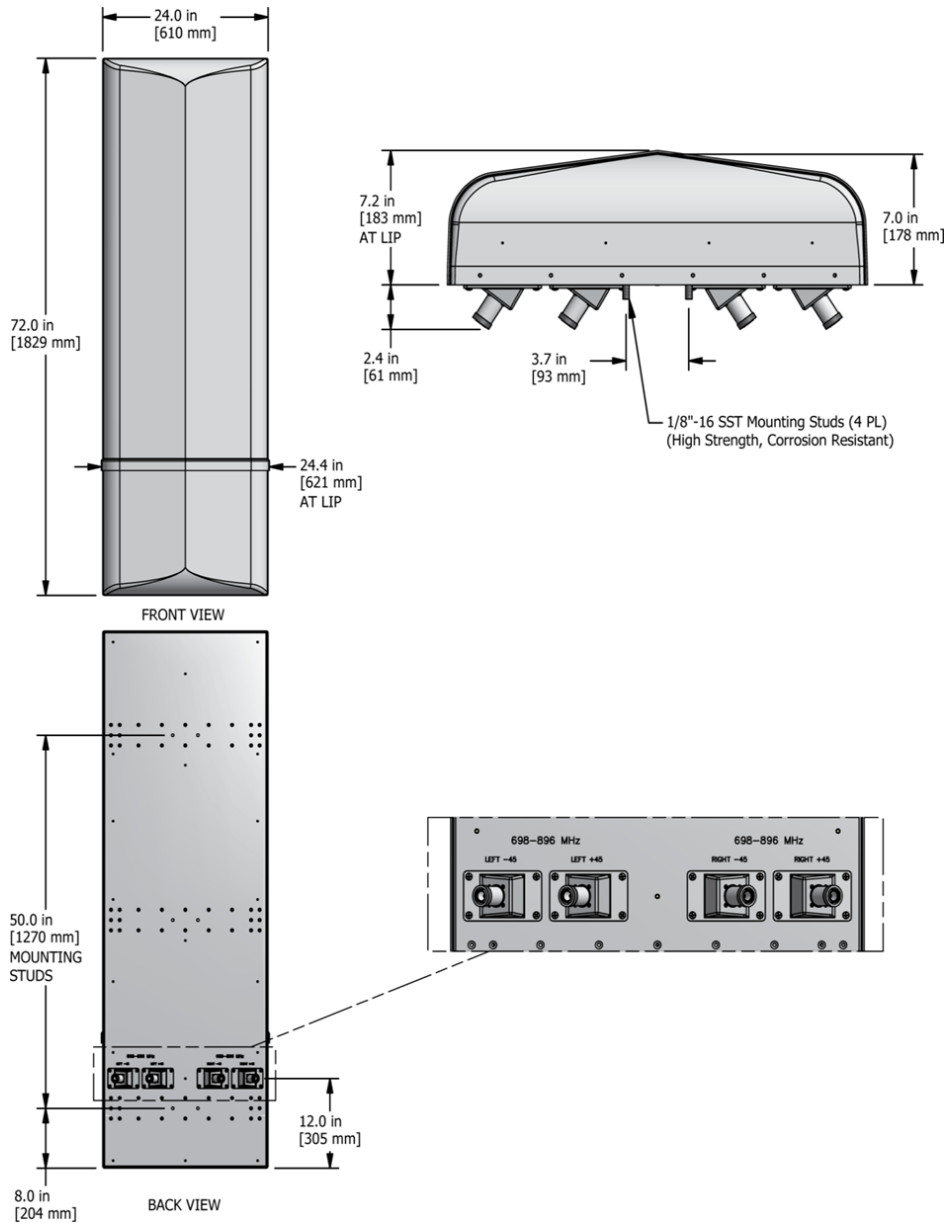
Dimensions, Length/Width/Depth	72.0/24.0/7.2 in (1829/610/183mm)
Connector (Quantity) Type	(4 or 8) 7-16 DIN Female
Connector Torque	220-265 lbf-in (25-30 N-m)
Connector Location	Back
Antenna Weight	59 lbs
Bracket Weight	13.2 lb
Standard Bracket Kit	919032 (Included)
Mechanical Downtilt Range	0°
Radome Material	High Strength Luran, UV Stabilized, ASTM D1925
Wind Survival	140 mph (225 km/h)
Front Wind Load	298.44 lbf (1327.57 N) @100mph
Equivalent Flat Plate	5.94 sq-ft (c=2) @ 100mph

ORDER INFORMATION

MODEL	DESCRIPTION
X7C-MB-634-0	X-Pol antenna with four back DIN connectors with 0° Fixed Tilt
X7C-MB-634-2	X-Pol antenna with four back DIN connectors with 2° Fixed Tilt
X7C-MB-634-4	X-Pol antenna with four back DIN connectors with 4° Fixed Tilt
X7C-MB-634-6	X-Pol antenna with four back DIN connectors with 6° Fixed Tilt
X7C-MB-634-0-ip	X-Pol antenna with eight back DIN connectors with 0° Fixed Tilt and Internal Diplexers
X7C-MB-634-2-ip	X-Pol antenna with eight back DIN connectors with 2° Fixed Tilt with Internal Diplexer
919049	Optional Bracket Kit, 3-Point, 6 degree D-tilt, For 4.5" OD Pole

Mechanical Outline Drawing

X7C-MB-634



X7C-MB-634-i

