

Rooftop Ballasted Mounting System

SC-BKT-RTB-XX

Small Cell solutions	
<p>JMA Wireless’s proven mounting solutions are ideal complements to all infrastructure upgrades or retrofit projects. Our standard systems integrate with any antenna and radio configurations, effortlessly blend into urban/suburban environments, and withstand harsh weather conditions. This platform accommodates multiple shapes, sizes and weights, providing flexibility for future hardware needs. The product portfolio includes ultra-RF transparent, maintenance-free coverings, high-strength steel mounting brackets, and light-weight, durable carbon fiber poles.</p>	<p>Vent hood (sold separately)</p> <p>JMA Wireless antenna (sold separately)</p>

General specifications	
<ul style="list-style-type: none"> ▪ Rated for extreme exposure zones ▪ Ultra-RF transparent sheathing ▪ One-piece construction ▪ No onsite welding required 	<ul style="list-style-type: none"> ▪ Universal platform for all hardware options ▪ Accommodates varied heights ▪ Optional RRU mounting post ▪ Two configuration options (shown on page 2)

Ordering information	
Part number	Description
SC-BKT-RTB-SL	Roof Ballast w/10’ pole & sleeve – silver
SC-BKT-RTB-BR	Roof Ballast w/10’ pole & sleeve – brown
SC-BKT-RTB-GR	Roof Ballast w/10’ pole & sleeve – gray
Additional components (included w/ SC-BKT-RTB-SL)	Description
SC-BKT-SLA	Universal Cantenna Mount Sleeve
SC-BKT-KPM	1 RRU King Post Mount

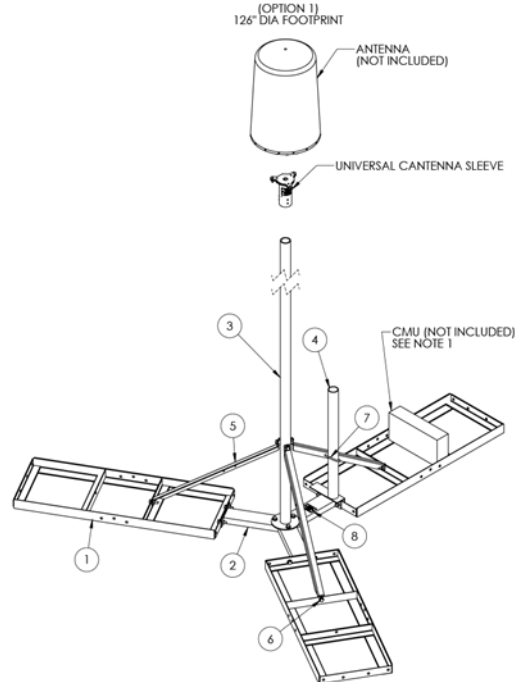
Rooftop Ballasted Mounting System

SC-BKT-RTB-XX

Mechanical drawings

Configuration option # 1

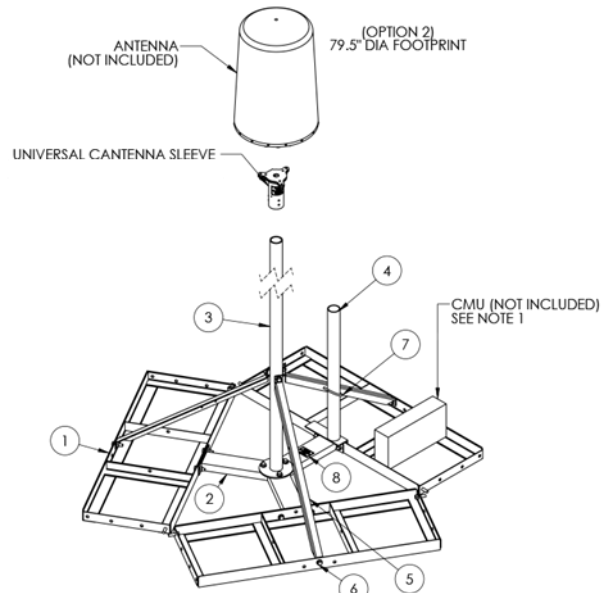
Item No.	Qty	Description
1	3	BALLAST TRAY WELDMENT
2	1	BASE WELDMENT
3	1	MAST WELDMENT, 10' X 2" NOM PIPE
4	1	RADIO MOUNT WELDMENT
5	3	MAST SUPPORT LEG WELDMENT
6	15	HFHCS, 1/2"-13UNC X 1.25 LG, GR5, VIB RES, ZINC
7	1	U-BOLT, 3" NOM PIPE
8	1	NAMEPLATE, LABEL, ADHESIVE BACKED



NOTES:
1. PLACE CONCRETE MASONRY UNITS (CMU'S) ON BALLAST TRAYS TO OFFSET WIND LOADING ON ANTENNA.

Configuration option # 2

Item No.	Qty	Description
1	3	BALLAST TRAY WELDMENT
2	1	BASE WELDMENT
3	1	MAST WELDMENT, 10' X 2" NOM PIPE
4	1	RADIO MOUNT WELDMENT
5	3	MAST SUPPORT LEG WELDMENT
6	21	HFHCS, 1/2"-13UNC X 1.25 LG, GR5, VIB RES, ZINC
7	1	U-BOLT, 3" NOM PIPE
8	1	NAMEPLATE, LABEL, ADHESIVE BACKED



NOTES:
1. PLACE CONCRETE MASONRY UNITS (CMU'S) ON BALLAST TRAYS TO OFFSET WIND LOADING ON ANTENNA.

Rooftop Ballasted Mounting System

SC-BKT-RTB-XX

Mechanical drawings: SC-BKT-SLA, Universal Antenna Mount Sleeve (included)

Item No.	Qty	Description
1	1	UNIVERSAL ANTENNA MOUNT SLEEVE WELDMENT
2	1	SINGLE BOLT ADAPTER PLATE
3	6	SET SCREW, 5/16"-18UNC, CUP POINT, 5/16" LG, 18-8 SS
4	6	WASHER, FLAT, 5/16" 18-8 SS
5	6	NUT, NYLOCK, 5/16"-18UNC, 18-8 SS
6	1	NAMEPLATE, LABEL, ADHESIVE BACKED
7	1	CORROSION-RESISTANT ANTI-SEIZE LUBRICANT 0.14 oz

