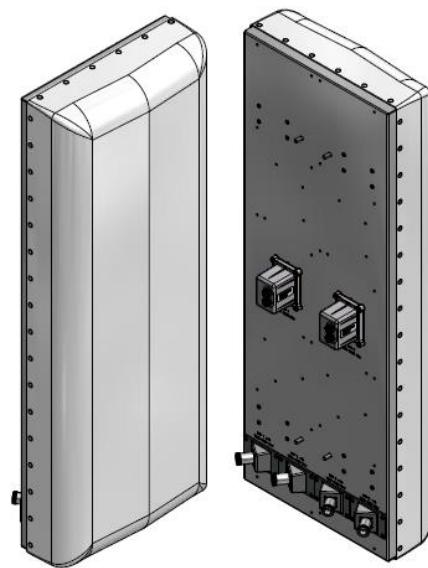


QAP-FRO-440-V

1695-2180MHz, 50.5" Fast Roll Off 40° H-Beam MIMO Antenna RET

- 4-Port 1695-2180 MHz Fast Roll Off (FRO) Antenna:
 - Two High Band Antennas in a Single Radome, Each with Separate Tilts
- Can be used for MIMO Applications
- Suitable for LTE/CDMA/UMTS/GSM
- AISG v2.0 RET Control



ELECTRICAL SPECIFICATIONS

Frequency Band, MHz	1695-1880	1850-1990	1920-2180
Horizontal Beamwidth, 3dB points	40°	38°	33°
Gain, dBi	17.4	17.7	17.9
Vertical Beamwidth, 3dB points	7.3°	7.2°	6.7°
Front-to-Back at 180°, dB		> 28	
Upper Sidelobe Suppression, Typical, dB		<-30	
Polarization		+/-45°	
Electrical Downtilt		0°-6° or 4°-10°	
VSWR/Return Loss, dB, Maximum		1.5:1/14.0	
Isolation Between Ports, dB, Minimum		>28	
Intermodulation (2x20w), IM3, dBc, Maximum		-150	
Impedance, ohms		50	
Maximum Power Per Connector, CW		250	

MECHANICAL SPECIFICATIONS

Dimensions, Length/Width/Depth	50.5 x 18.8 x 7.3 in (1282/479/157mm)
Connector (Quantity) Type	(4) 7-16 DIN Female
Connector Torque	220-265 lbf-in (23-30 N-m)
Connector Location	Back
Antenna Weight	33.6 bs (15.2kg)
Bracket Weight	13.2 lbs (5.99Kg)
Standard Bracket Kit	919011 (Included)
Mechanical Downtilt Range	0°-12°
Radome Material	High Strength Luran, UV Stabilized, ASTM D1925
Wind Survival	150 mph (241 km/h)
Front Wind Load @100mph	163.8 lbf (728.8 N) @100mph
Equivalent Flat Plate @ 100mph	3.26 sq-ft (c=2) @ 100mph

RET INFORMATION

Model	RET-200
Mounting Location	Back
Weight	1.2 lb (0.54 kg)
Communication Standard	AISG 2.0
Control System	PCU-1000



ORDER INFORMATION

MODEL	DESCRIPTION
QAP-FRO-440-VR0	X-Pol antenna with motor for remote electrical tilt (RET) range of 0-6°
QAP-FRO-440-VR4	X-Pol, antenna with motor for remote electrical tilt (RET) range of 4-10°
Optional Bracket Kit	919036 - Bracket Kit, 2-Point, 12deg D-tilt, For 4.5" OD Pole
992100-CA005-SC	AISG Jumper Cable, M/F, 0.5 meters

Mechanical Outline Drawing: RET Version

