

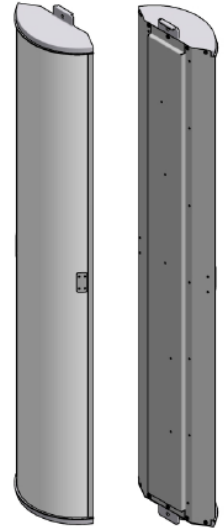
FLG-X7CAP-665

Dual Band Xpol, 65° H-Beams

698-896 MHz

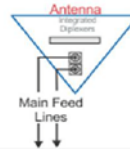
1710-2170 MHz

- Flag Antenna: Designed for Flag Pole Installations
- Suitable for LTE/CDMA/UMTS/GSM
- Optional Internal Diplexers



Optional Internal Diplexers:

Reduces Mainline Loss
Eliminates External Devices



ELECTRICAL SPECIFICATIONS

Frequency Band, MHz	698-896	1710-2170
Horizontal Beam Low / High Band	65°	65°
Vertical Beam Low / High Band	11°	5°
Gain @ 896 MHz	15.9 dBi	
Gain @ 2155 MHz	18.7 dBi	
Polarization	Slant +/- 45°	
Electrical Downtilt Range, 2° Increments	2-10° low band & 2-6° high band	
VSWR/Return Loss	<1.50:1 / 14.0 dB	
Front-to-Back at Horizon	>27 dB	
Front-to-Back at Horizon High Band	>27 dB	
Upper Side Lobe Suppression	<-18 dB	
Impedance	50 Ohms	
Power Input Per Connector CW, ("ip") (w)	500	
Intermodulation (2x20W)	<-150 dBc	

MECHANICAL SPECIFICATIONS

RF Interface (QTY) Location	(2) If internally diplexed (4) if non diplexed 7/16 (F) DIN at the bottom
Recommended Connector Coupling Torque	220-265 lbf-in (25-30 N-m)
Antenna Dimensions (LxWxD)	74.6 x 13.9 x 6.2 in (1895x354x159mm)
Antenna Weight	33 lbs
RF Distribution	Printed Microstrip Substrate
Radome	Ultra High-Strength Luran
Weatherability	UV Stabilized, ASTM D1925
Radome Water Absorption	ASTM D570, 0.45%
Environmental	MIL-STD-810E
Wind Survival	Must be mounted in an enclosed structure
Wind Load @100mph	Not specified
Equivalent Flat Plat @100mph	Not specified
Mounting Bracket (919038)	Stainless Steel Band Straps for 6-8" Diameter pole (Included)

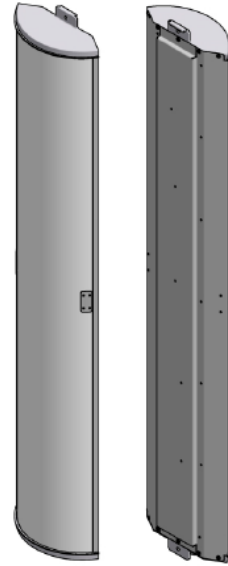
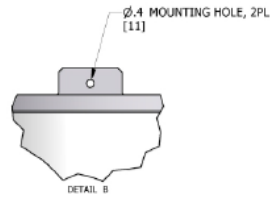
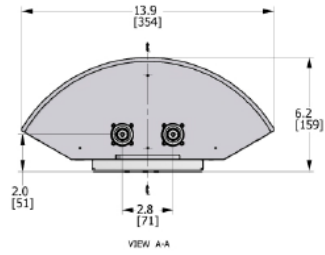
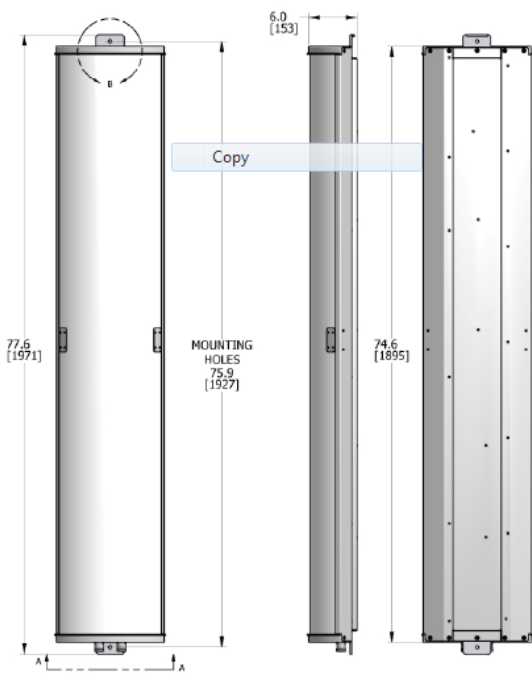
ORDER INFORMATION

MODEL	DESCRIPTION
FLGX7CAP665-xyip	This model includes two built-in diplexers to reduce input connector ports from 4 to 2
FLGX7CAP665-xy	This model includes no built-in diplexers, four connector ports on bottom. "xy" is a placeholder for the built-in fixed electrical downtilt in degrees set "x" to 2, 4, 6, 8 or 10 for low frequency band-side of antenna set "y" to 2, 4 or 6 for high frequency band-side of antennas
FLG-6-3	Optional base mounting plate with 6ft center pole only, includes brackets, holds 3 FLG antennas.
919043	Optional Flag pole Mounting Kit for 6' Long antenna
919040	Optional 4" extended mounting bracket kit (Band Straps for 10-14" Dia. Pole not included)

***Antenna Weight may vary slightly with options.**

Mechanical Drawing

This antenna must be mounted in an enclosed structure



Recommended Connector Coupling Torque
7/16 DIN: 220-265 lbf-in (25-30 N-m)

"ip" option model shown