

FLG-X7C-465

Xpol, 65° H-Beam, 698-896 MHz

- Flag Pole Antenna
- Suitable for LTE/CDMA/UMTS/GSM



ELECTRICAL SPECIFICATIONS

Frequency Band, MHz	698-896 MHz
Polarization	Slant +/- 45°
Gain @ 896 MHz	14.9 dBi
Horizontal Beam (3dB Points)	65°
Vertical Beam (3dB Points)	14.5°
Elect. Downtilt Range, 2° Increments	0-10°
VSWR / Return Loss	<1.45:1 / 14.7 dB
Front-to-Back at Horizon Low Band	>26 dB
Front-to-Back at Horizon High Band	>30 dB
Upper Side Lobe Suppression	<-17 dB
Impedance	< -27
Power Input Per Port	50 Ohms
Intermodulation (2x20W)	50
Maximum Power Per Connector, CW (w)	500
Intermodulation (2x20W)	<-150 dBc

MECHANICAL SPECIFICATIONS

Input Connector (female)	50.6 x 13.9 x 5.6 in. (1285 x 353 x 142 mm)
Antenna Dimensions (LxWxD)	2 Bottom Mounted 7/16 DIN
Antenna Weight	Printed Microstrip Substrate
Lightning Protection	Ultra High-Strength Luran
RF Distribution	UV Stabilized, ASTM D1925
Radome	ASTM D570, 0.45%
Weatherability	MIL-STD-810E
Radome Water Absorption	18.4 lbs
Environmental	Direct Ground
Wind Survival	Must be mounted in an enclosed structure
Front Wind Load @100mph	Not specified
Equivalent Flat Plate @100mph	Not specified
Mounting (919038)	Stainless Steel Band Straps

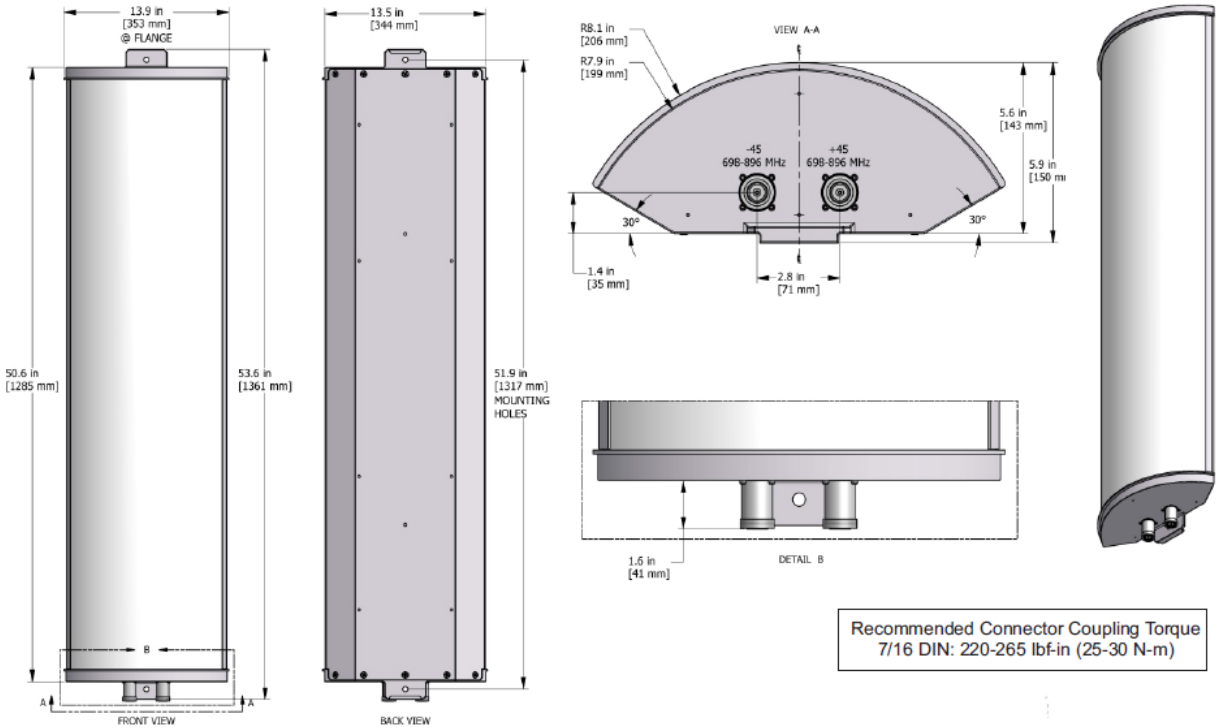
ORDER INFORMATION

MODEL	DESCRIPTION
FLG-X7C-465-x	"x" is a placeholder for the built-in fixed electrical downtilt in degrees set "x" to 0, 2, 4, 6, 8 or 10 for electrical tilt.
FLG-4-3	Option, base plate, 4ft center pole and brackets only.

Recommended Connector Coupling Torque
7/16 DIN: 220-265 lbf-in (25-30 N-m)

Mechanical Outline Drawing

This antenna must be mounted in an enclosed structure



Recommended Connector Coupling Torque
7/16 DIN: 220-265 lbf-in (25-30 N-m)