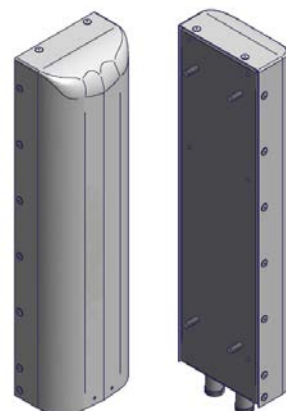


AXP15-60

X-Pol Antenna, 1710-2170 MHz, (24.1", 60° H-Beam)

- oDAS Antenna
- Broadband Radiators
- Highly Reliable Fixed Tilt Design
- Suitable for LTE/CDMA/UMTS/GSM
- Mechanical Tilt Bracket Included



ELECTRICAL SPECIFICATIONS

Frequency Band, MHz	1710-1880	1850-1990	1920-2170
Horizontal Beam Width, 3dB points, Average	60°	56°	54°
Gain, dBi, Average	15.1	15.4	15.8
Vertical Beam Width, 3dB points, Average	15.0°	14.3°	13.7°
Front-to-Back at 180°, dB	>25		
Upper Side Lobe Suppression, Typical, dB	<-18		
Polarization	+/-45°		
Electrical Down Tilt, Fixed	0°		
VSWR/Return Loss, dB, Maximum	1.4:1-15.6		
Isolation Between Ports, dB, Minimum	28		
Intermodulation (2x20w), IM3, dBc, Maximum	-150		
Impedance, ohms	50		
Maximum Power Per Connector, CW	125 @ 1900 MHz		

MECHANICAL SPECIFICATIONS

Dimensions, Length/Width/Depth	24.0/6.7/4.1 in. (610/170/104mm)	
Connector (Quantity)	(2) 7-16 DIN Female	
Connector Torque	220-265 lbf-in (23-30 N-m)	
Connector Location	Bottom	
Antenna Weight	5.0 lbs (2.3 kg)	<i>Note: Weight varies slightly based on ordering options</i>
Bracket Weight	14.0 lb. (6.4 kg)	
Standard Bracket Kit	CSS P/N 919017 (Included)	
Mechanical Down Tilt Range	0-21°	
Radome Material	High Strength Luran, UV Stabilized, ASTM D1925	
Wind Survival	150 mph (241 km/h)	
Front Wind Load	27.7 lbf (123.4 N) @100mph	
Equivalent Flat Plate	0.55 sq-ft (c=2) @ 100mph	

ORDER INFORMATION

MODEL	DESCRIPTION
AXP15-60-0-B	X-Pol antenna with two bottom DIN connectors