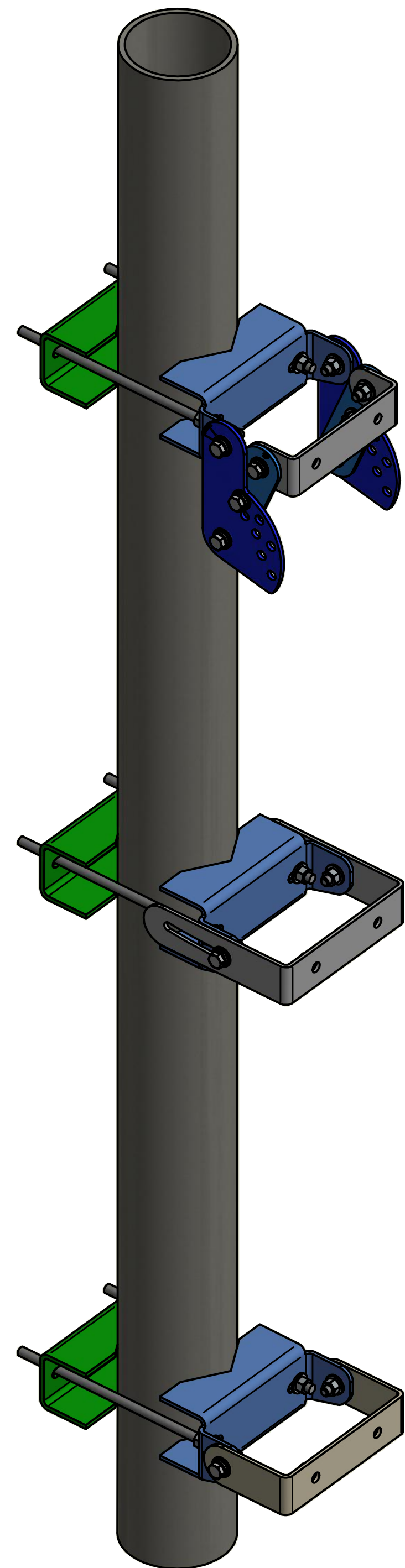


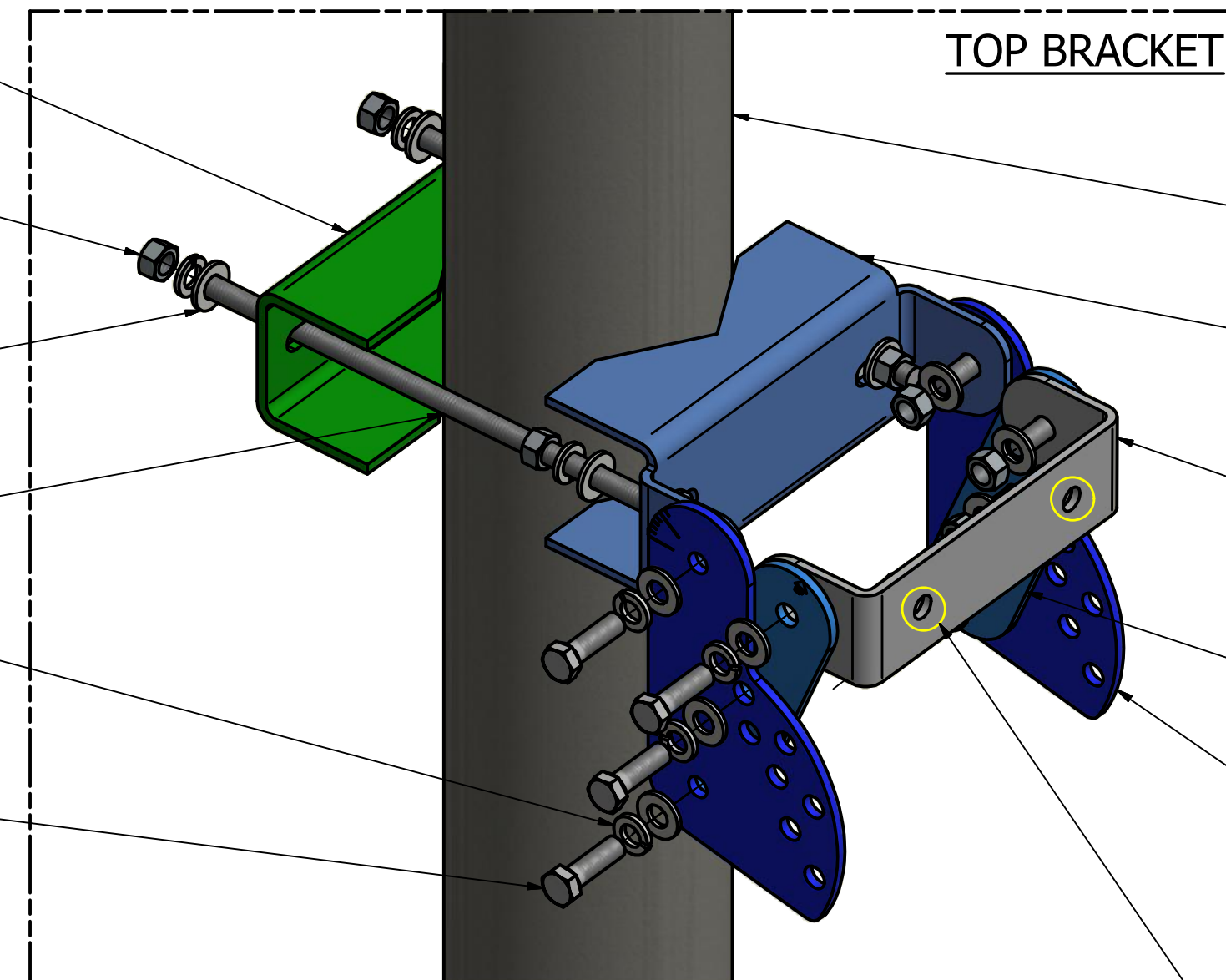
NOTES:

1. All hardware to be torqued to 15 ft-lbs after mechanical downtilt is set.
2. See Detail "D" for pole alignment instructions.
3. The bracket kit includes galvanized hardware and a set of SST nuts. SST nuts must be used on antenna-side brackets that attaches to the antenna as shown.

919049 BRACKET KIT, INSTALLATION, 3-POINT, 6DEG D-TILT (OPTIONAL 4.5 OD POLE)

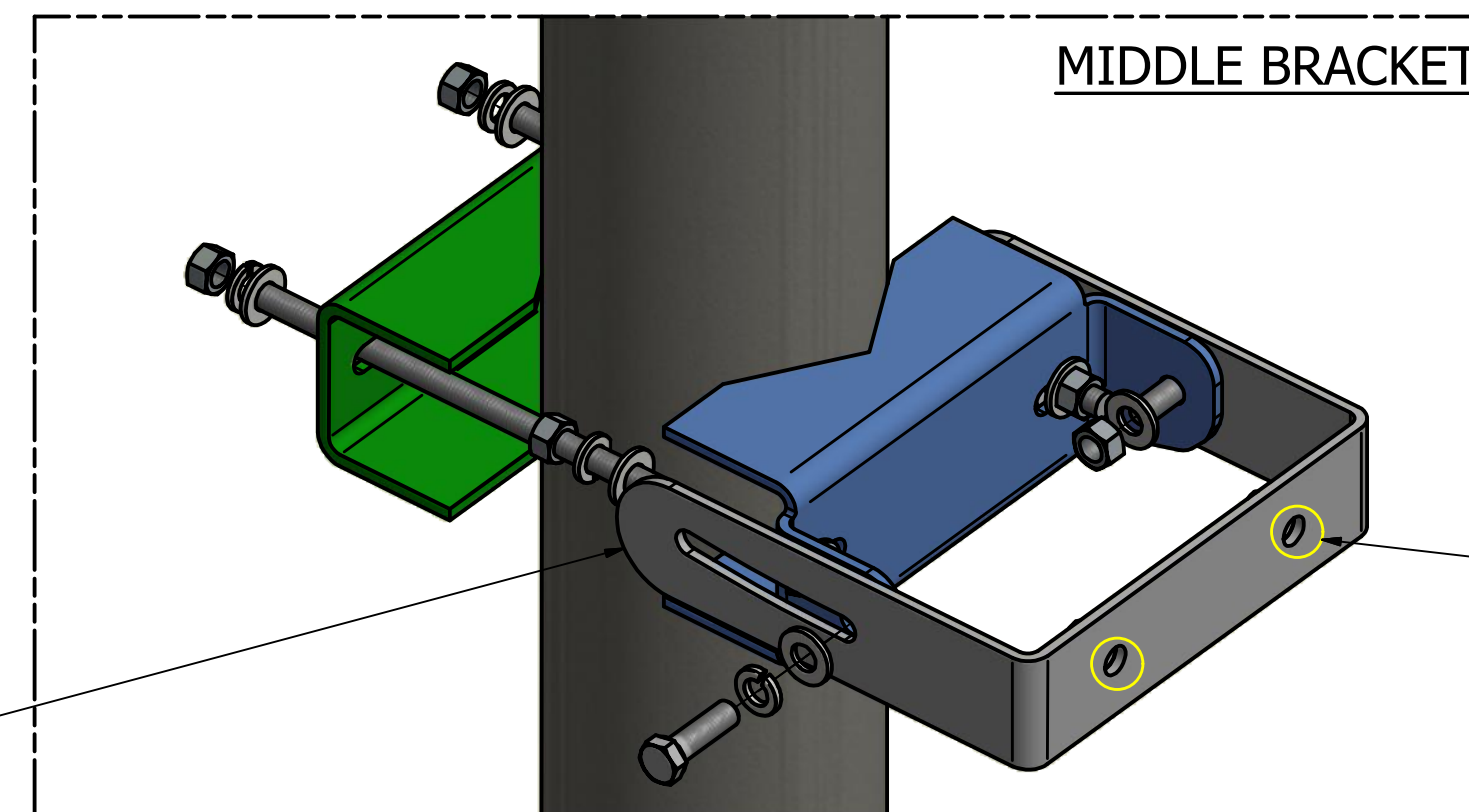


- Anti-Rotation Bracket, Back (3 PL) 457193-PF
- 3/8"-16 Nut (30 PL)
- 3/8" Flat Washer (48 PL)
- 3/8"-16 x 6" Lg Stud (6 PL)
- 3/8" Lock Washer (30 PL)
- Hex Cap Bolt 3/8" x 1" (12 PL)



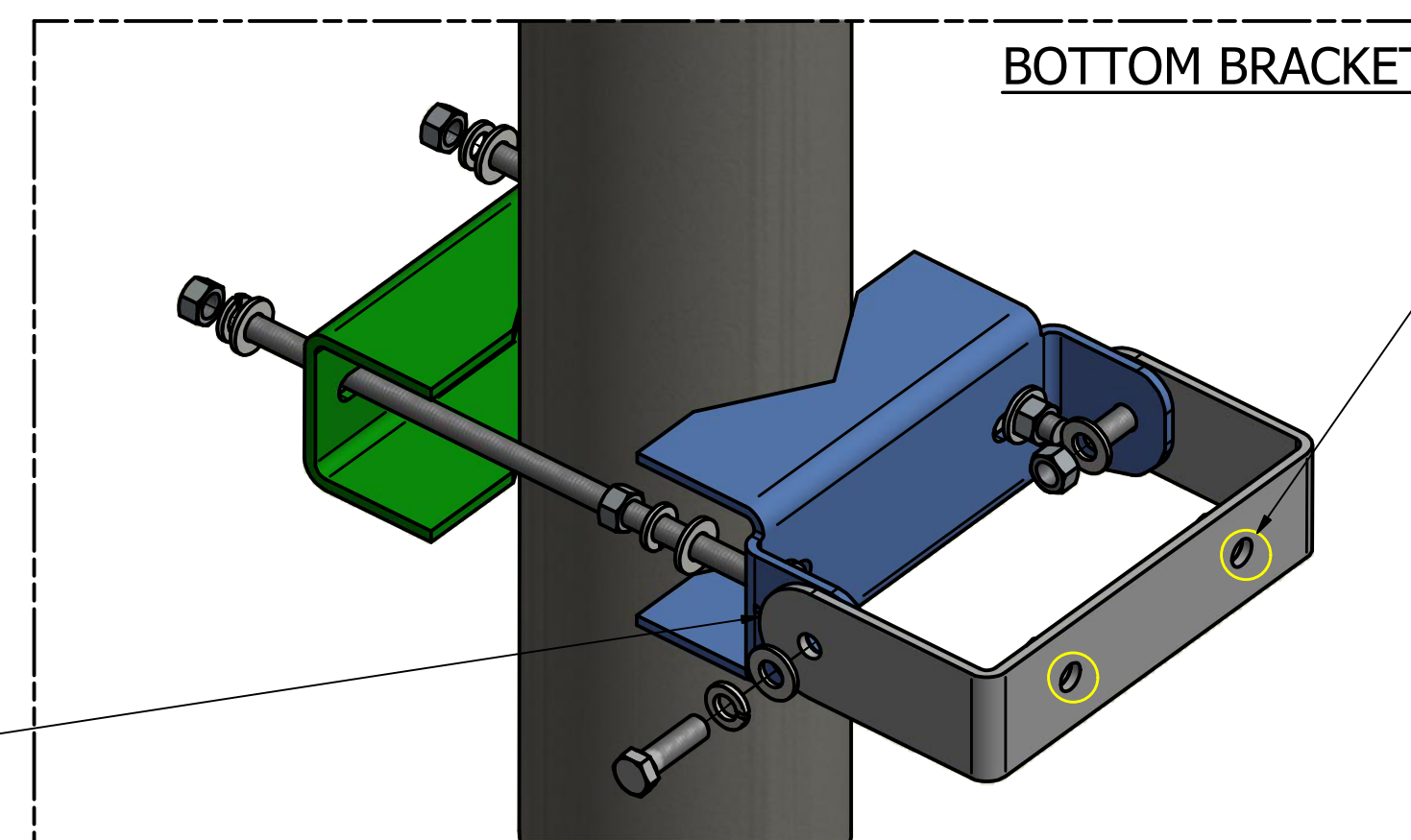
TOP BRACKET

- 4.5" O.D. Pole
- Anti-Rotation Bracket, Front (3 PL) 457246-PF
- Antenna Top Bracket 457229-PF
- Linkage Arm (2 PL) 457228-PF
- Linkage 6Deg (2 PL) 457101-PF



MIDDLE BRACKET

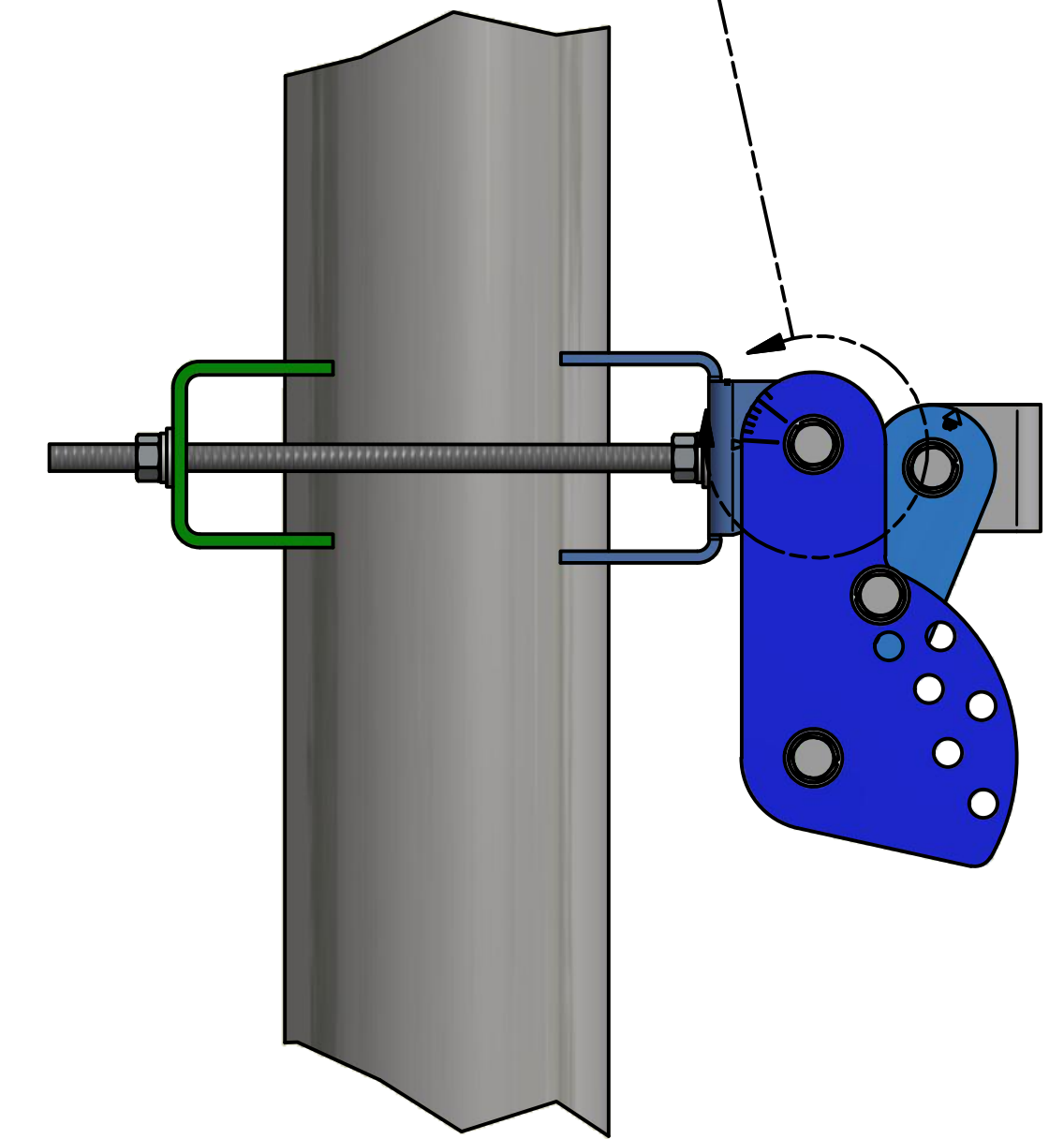
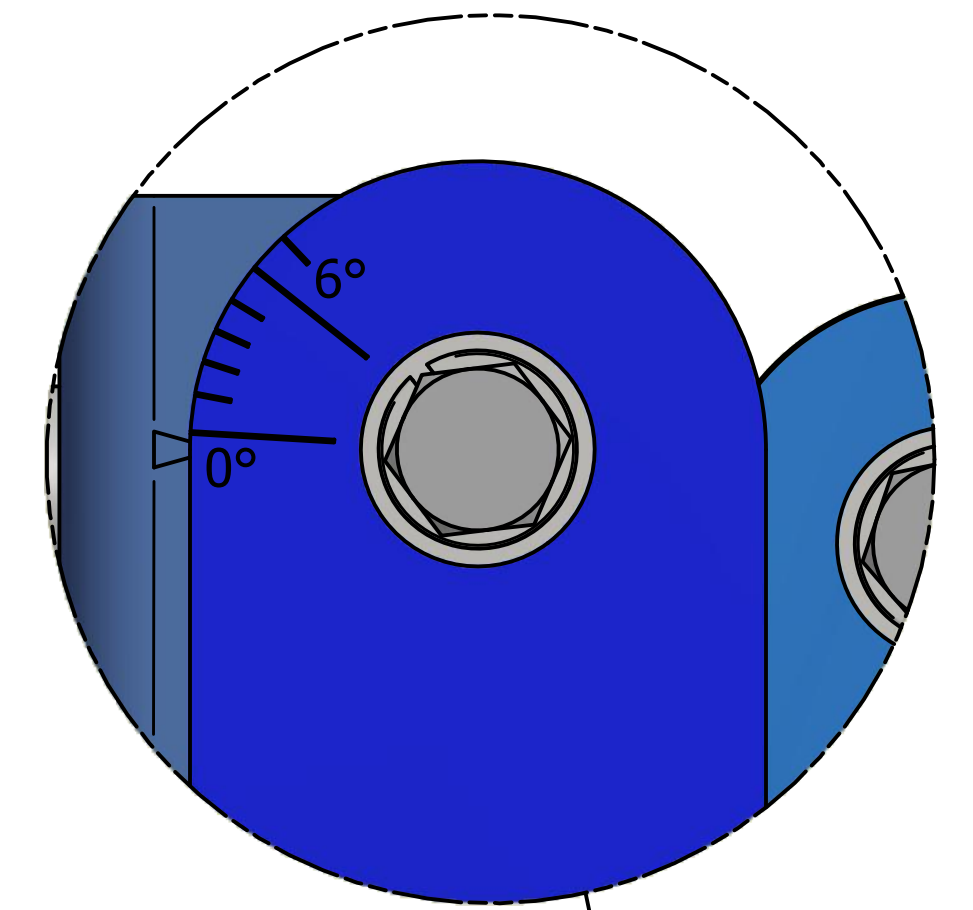
- Center Bracket Slider 457177-PF



BOTTOM BRACKET


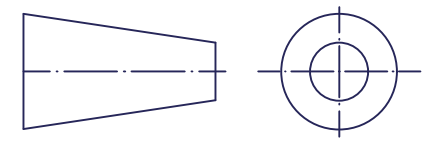
- Bottom Bracket 457231-PF

Must USE SST Nuts to attach Antenna-side brackets to the Housing. (6 PL)



DETAIL D

PRIOR TO MOUNTING THE ANTENNA TO POLE:
-Align tick mark on bracket to 0° line of Linkage arm and tighten hardware. This will assure proper alignment of bracket to pole.

UNLESS OTHERWISE SPECIFIED DIMENSIONS ARE IN INCHES TOLERANCES ON .XXXX ±.005 .XX ±.02 .XXX ±.010 .X ±.1 ANGLES ±.5°	NAME	DATE	 CSS ANTENNA, INC. 2206-D LAKESIDE BLVD EDGEWOOD, MARYLAND 21040 410-612-0080 FAX: 410-612-0336
	DRAWN Jordanr	2/27/2013	
	CHECKED		
	APPROVED S. Shah		TITLE INSTALLATION INSTRUCTIONS
 THIRD ANGLE PROJECTION	THIS DRAWING AND THE INFORMATION CONTAINED HEREIN ARE THE PROPERTY OF CSS ANTENNA, INC. AND SHALL NOT BE REPRODUCED OR USED IN ANY WAY WITHOUT WRITTEN PERMISSION	SIZE D	DWG NO. 919049-AD FILE: 919049-AD Rev P1: BRACKET KIT, 8FT 4.5 pole 3 point support.dwg
		REV A	SH OF 1 1