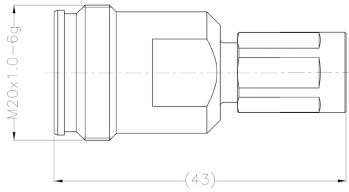




# Low PIM Adapter

## 4.3-10 Female to NEX10 Male



Contact technical support:  
1-888-201-6073  
[techsupport@jmawireless.com](mailto:techsupport@jmawireless.com)

Tools required	JMA part number	Comment
Torque wrench	TQ-78-F8	8 lbf·ft   10.85 N·m
Torque wrench	TQ-716-F3.7	3.7 lbf·ft   5.0 N·m
Frequency band	VSWR	Comment
DC-2 GHz	≤ 1.08	
2-2.7 GHz	≤ 1.12	
3.4-4.2 GHz	≤ 1.22	
Electrical	Specification	Comment
Characteristic impedance	50 ohm	IEC 61169
Frequency range	DC-6 GHz	
Dielectric withstanding voltage	≥ 1500 V(rms) 50 Hz @ sea level	
Dielectric resistance	5000M ohm	
Center contact resistance	≤ 1 milliohm	
Outer contact resistance	≤ 1.5 milliohm	
Durability	Mating cycles ≥ 100	
PIM	≤ -160 dBc	
Environmental	Specification	Test
Operating temperature	-55 °C to +85 °C (-67 °F to 185 °F)	
Storage temperature	-55 °C to +85 °C (-67 °F to 185 °F)	
Moisture migration	Mated & unmated, IP67	IEC 60529:2001
Components	Material	Plating
Center conductor	Phosphor bronze	Ag
Body	Brass	CuSnZn
Insulator	PTFFE	

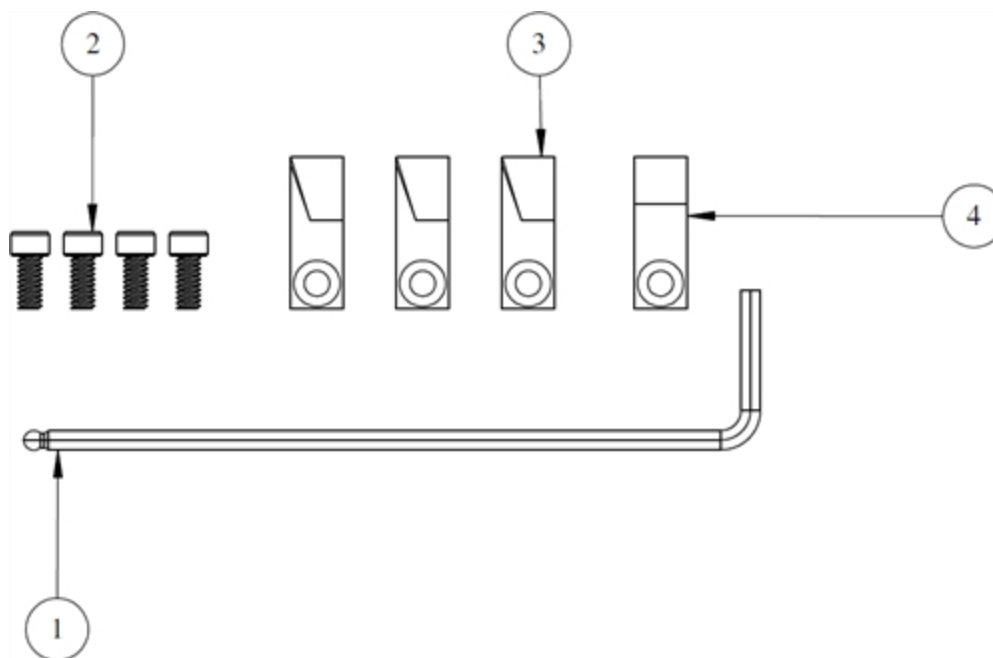
06/25/24



# RBK-SP-1/2-LDF4D

Replacement blade kit: SP-1/2-LDF4D

Item	Description	Qty.
1	3/32" HEX WRENCH	1
2	SCREW 4-40 X 1/4" LONG SHCS	4
3	CUTTER LEFT - CT TOOL	3
4	CUTTER - CENTER CONDUCTOR CHAMFER	1

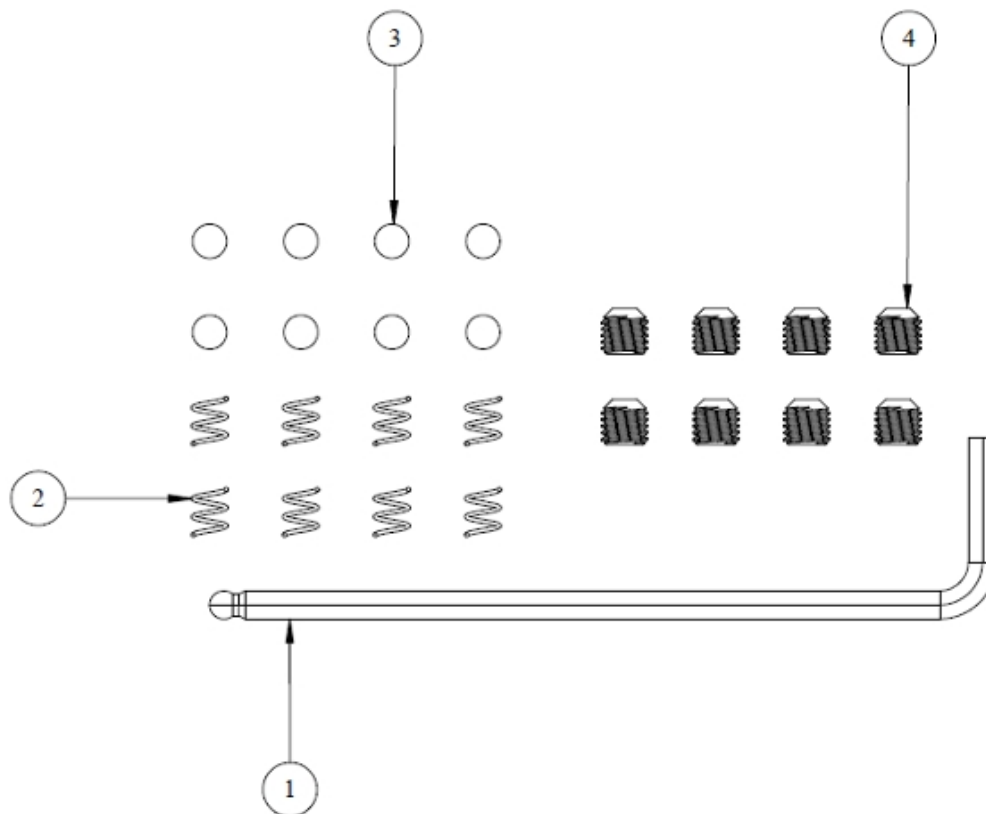




## RBB-19

3/16" Replacement ball bearing kit

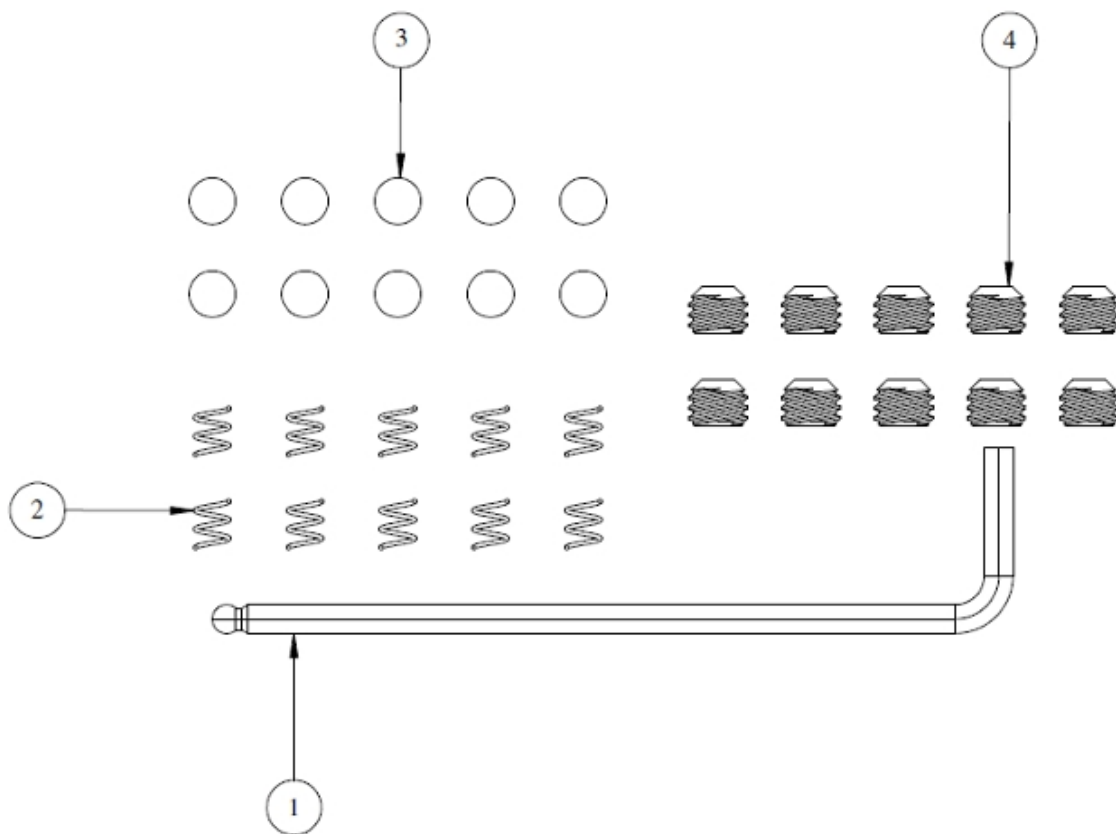
Item	Description	Qty.
1	5/32" HEX WRENCH	1
2	SPRING -LEE# LC022B-1 MW PLT	8
3	3/16" STEEL BALL	8
4	SET SCREW 1/4-28 X 1/4" SKT	8



# RBB-25

1/4" Replacement ball bearing kit

Item	Description	Qty.
1	5/32" HEX WRENCH	1
2	SPRING -LEE# LC022B-1 MW PLT	10
3	1/4" STEEL BALL	10
4	SET SCREW 5/16-18 X 1/4" SKT	10

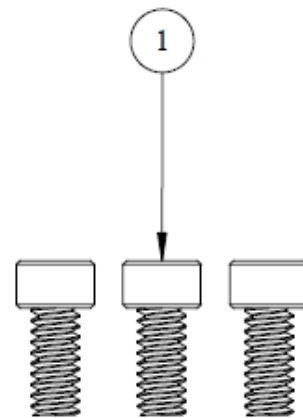
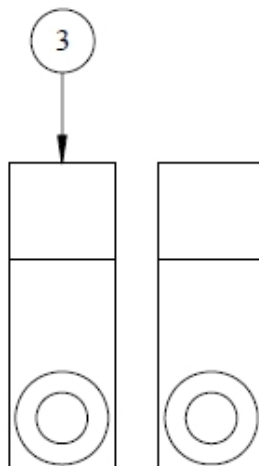




# RBK-SP-1/2-LWJ

Replacement blade kit: SP-1/2-LWJ

Item	Description	Qty.
1	SCREW - 4-40 X 1/4" LG SKT HD CAP	3
2	CUTTER LEFT - CT TOOL	1
3	CUTTER - JACKET STRIP TOOL	2

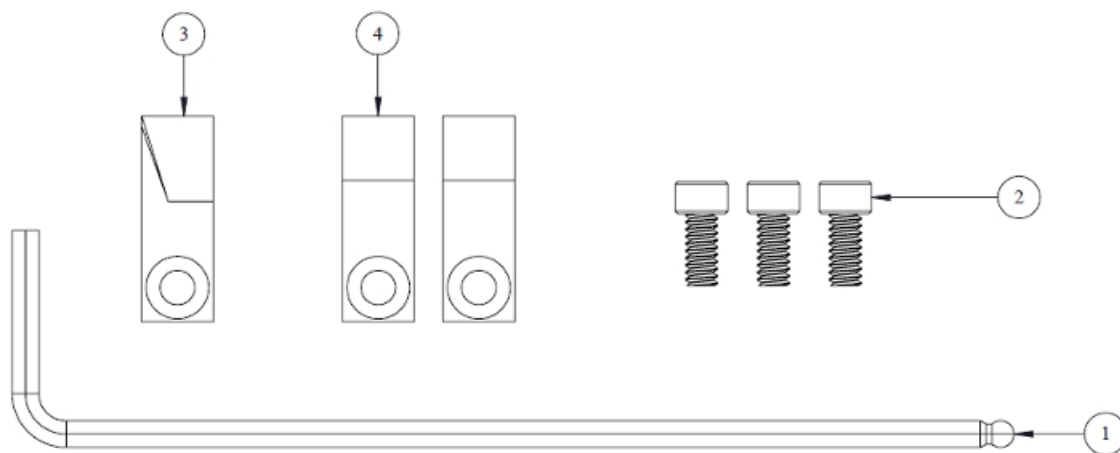




# RBK-SP-12PL-01

Replacement blade kit: SP-12PL-01

Item	Description	Qty.
1	WRENCH - 3/32" HEX, LONG ARM	1
2	SCREW - 4-40 X 1/4" LG SKT HD CAP	3
3	CUTTER LEFT - CT TOOL	1
4	CUTTER - JACKET STRIP TOOL	2

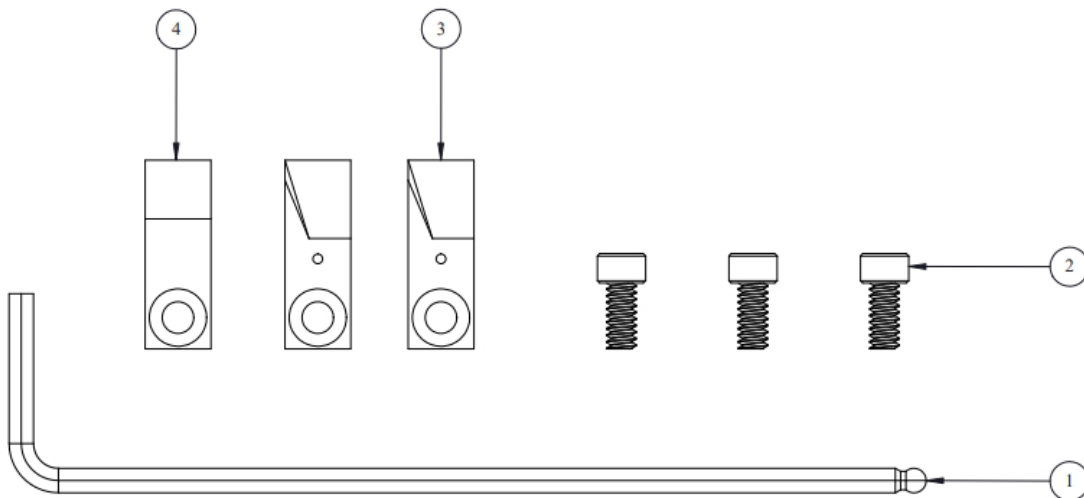




# RBK-SP-12S-01

Replacement blade kit: SP-12S-01

Item	Description	Qty.
1	WRENCH - 3/32" HEX, LONG ARM	1
2	SCREW - 4-40 X 1/4" LG SKT HD CAP	3
3	CUTTER LEFT - CT TOOL	2
4	CUTTER - JACKET STRIP TOOL	1

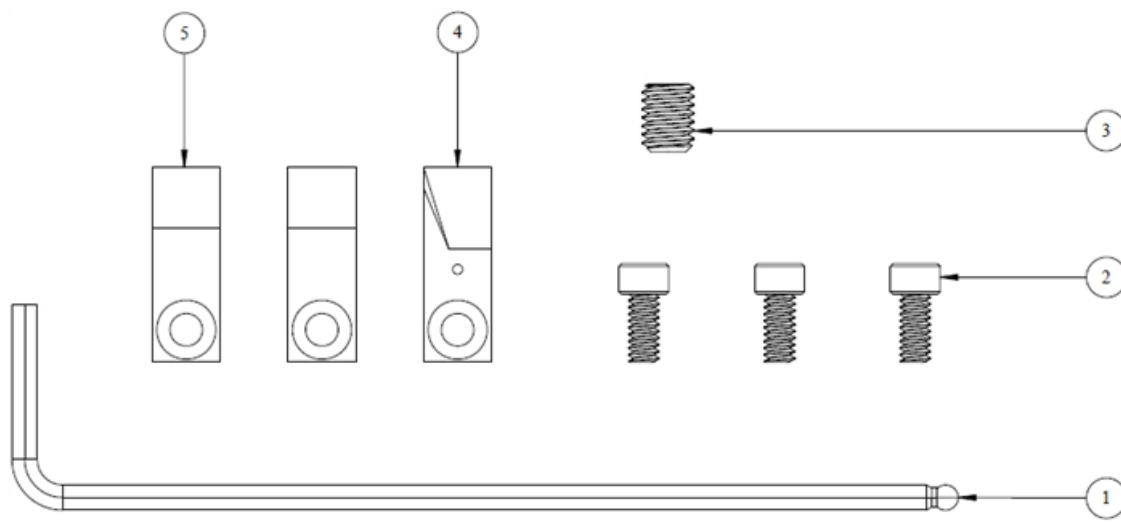




# RBK-SP-12S-PL

Replacement blade kit: SP-12S & SP-12SPL

Item	Description	Qty.
1	WRENCH - 3/32" HEX, LONG ARM	1
2	SCREW - 4-40 X 1/4" LG SKT HD CAP	3
3	SCREW-10-32 X 1/4" LG SET	1
4	CUTTER LEFT - CT TOOL	1
5	CUTTER - JACKET STRIP TOOL	2

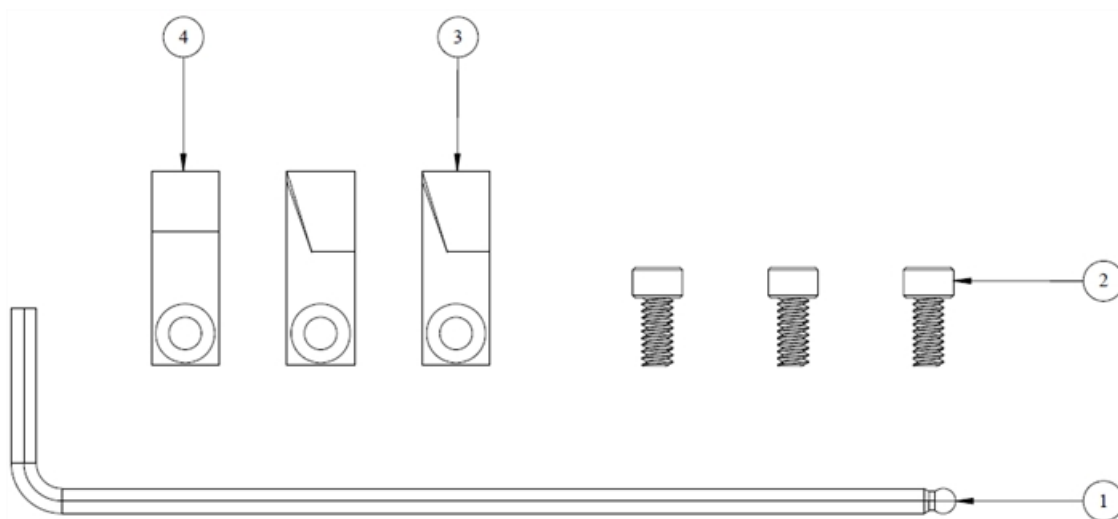




# RBK-SP-14

Replacement blade kit: SP-14

Item	Description	Qty.
1	WRENCH - 3/32" HEX, LONG ARM	1
2	SCREW - 4-40 X 1/4" LG SKT HD CAP	3
3	CUTTER LEFT - CT TOOL	2
4	CUTTER - JACKET STRIP TOOL	1

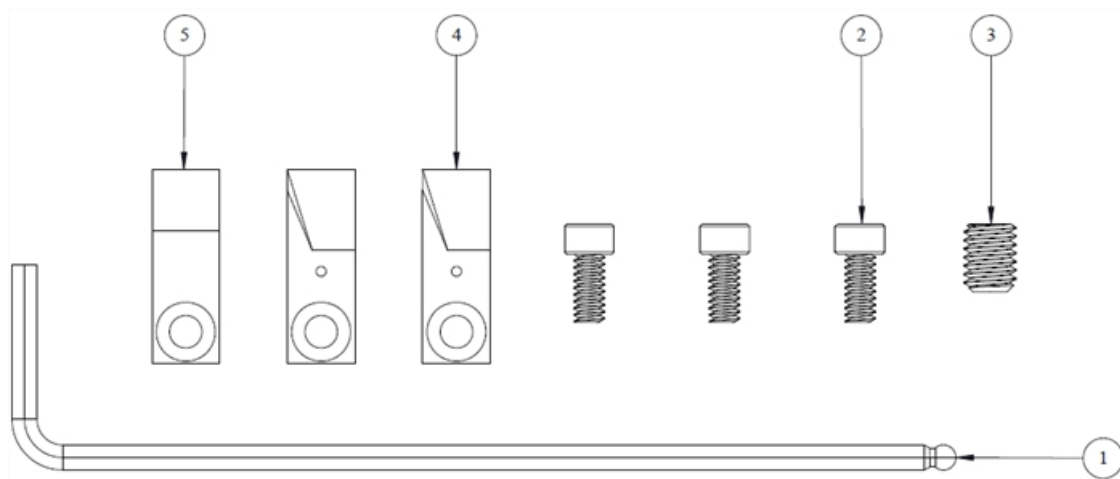




# RBK-SP-14S

Replacement blade kit: SP-14S

Item	Description	Qty.
1	WRENCH - 3/32" HEX, LONG ARM	1
2	SCREW - 4-40 X 1/4" LG SKT HD CAP	3
3	SCREW-10-32 X 1/4" LG SET (Note: This part is not required for the SP-38S-01)	1
4	CUTTER LEFT - CT TOOL	2
5	CUTTER - JACKET STRIP TOOL	1

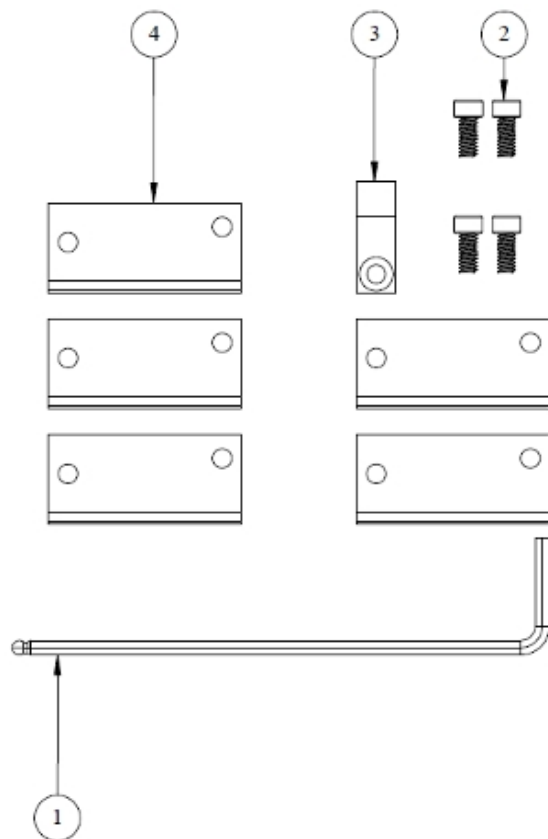




## RBK-SP-78

Replacement blade kit: SP-78

Item	Description	Qty.
1	3/32" HEX WRENCH	1
2	SCREW - 4-40 X 1/4" LG SKT HD CAP	4
3	CUTTER - JACKET STRIP TOOL	1
4	FACING BLADE	5

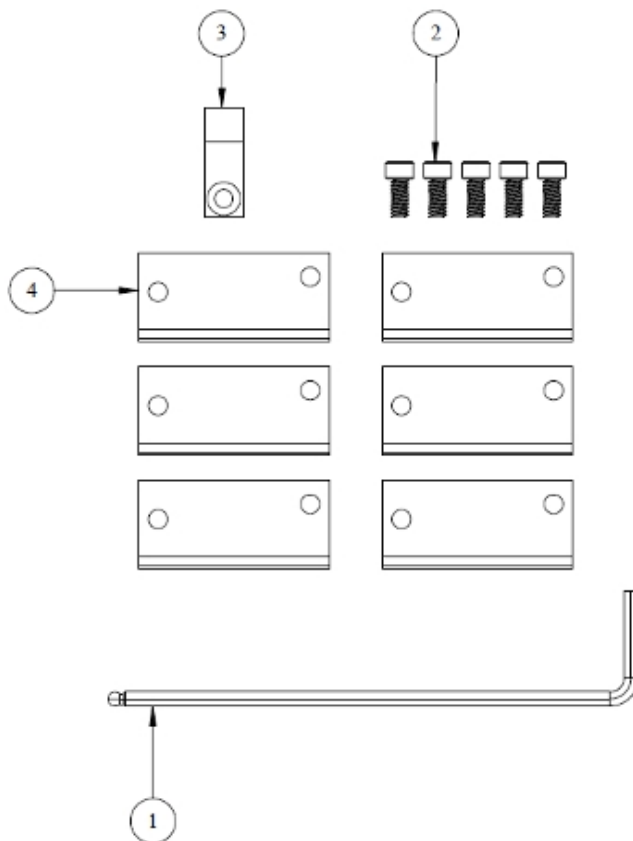




# RBK-SP-78FX

Replacement blade kit: SP-78FX

Item	Description	Qty.
1	3/32" HEX WRENCH	1
2	SCREW - 4-40 X 1/4" LG SKT HD CAP	5
3	CUTTER - JACKET STRIP TOOL	1
4	FACING BLADE	6

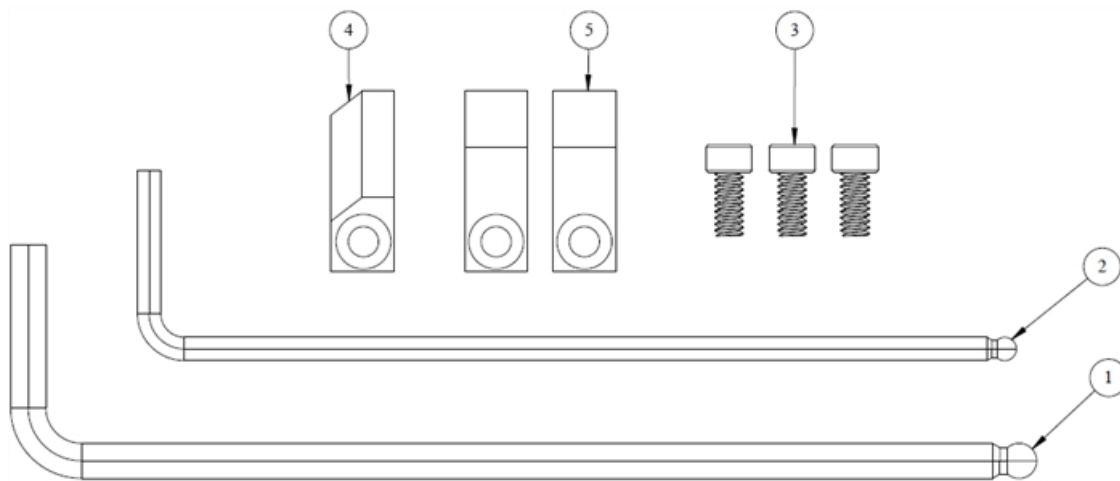




# RBK-SP-78PL

Replacement blade kit: SP-78PL

Item	Description	Qty.
1	9/64" HEX WRENCH	1
2	3/32" HEX WRENCH	1
3	SCREW - 4-40 X 1/4" LG SKT HD CAP	3
4	CUTTER-JACKET/FACE TOOL	1
5	CUTTER-JACKET STRIPTOOL	2

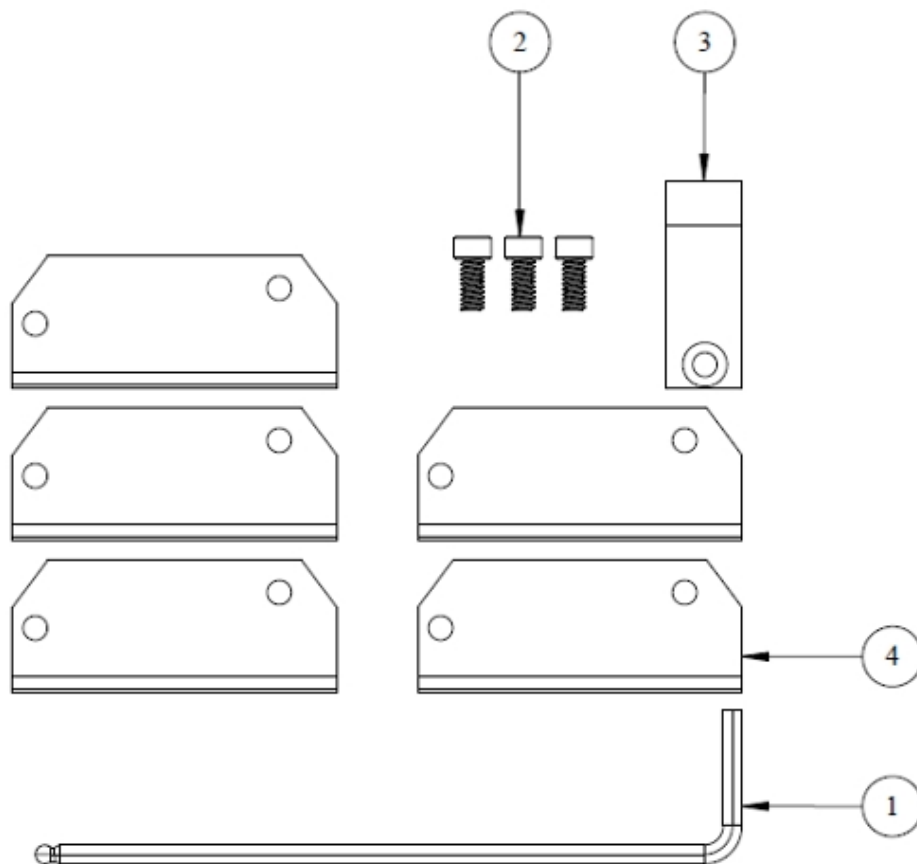




# RBK-SP-114

Replacement blade kit: SP-114

Item	Description	Qty.
1	WRENCH - 3/32" HEX, LONG ARM	1
2	SCREW - 4-40 X 1/4" LG SKT HD CAP	3
3	CUTTER-HELIAX COAXIAL CABLE	1
4	FACING BLADE	5

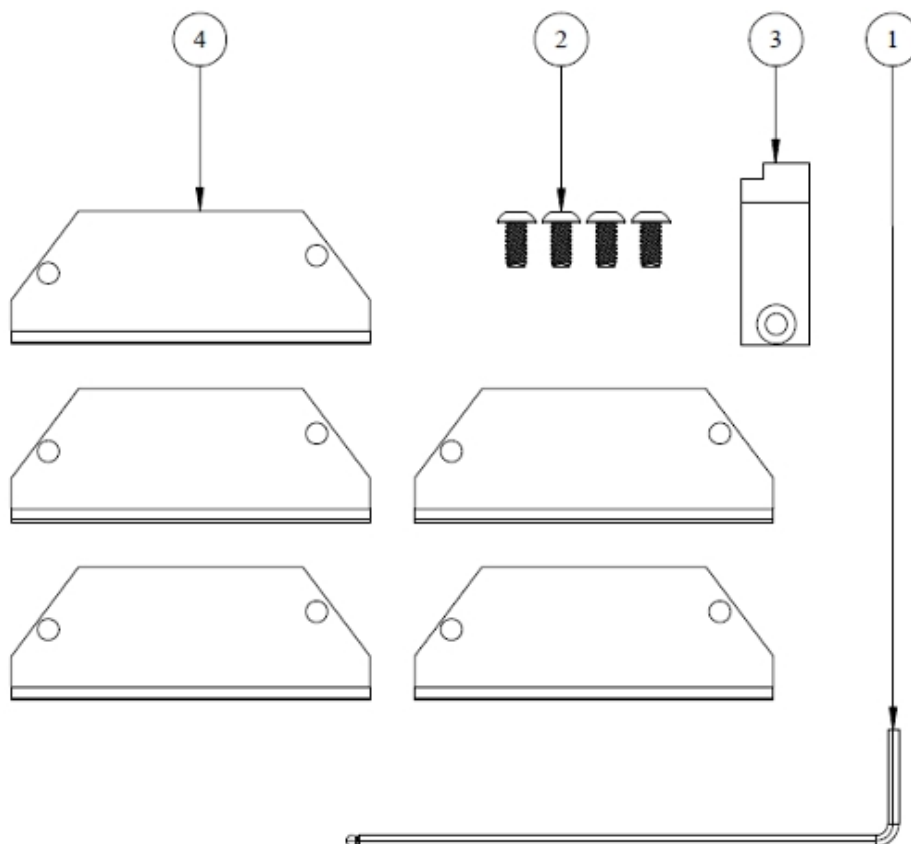




# RBK-SP-158

Replacement blade kit: SP-158

Item	Description	Qty.
1	1/16" HEX WRENCH	1
2	BH SOCKET CAP SCREW 4-40 X 25	4
3	CUTTER	1
4	FACING BLADE	5

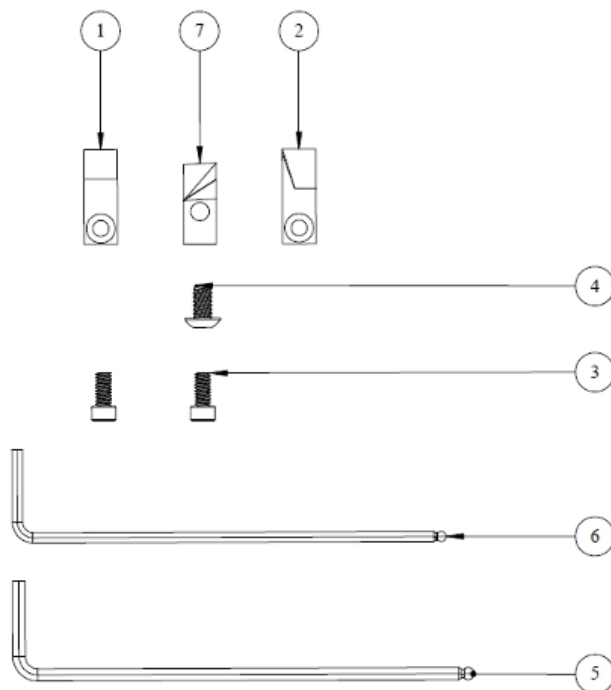




## RBK-SP-500/540

Replacement blade kit: SP-500/540

Item	Description	Qty.
1	CUTTER - JACKET STRIP TOOL	1
2	CUTTER LEFT - CT TOOL	1
3	SCREW - 4-40 X 1/4" LG SKT HD CAP	2
4	6-32 X 1 1/4" BHCS	1
5	WRENCH - 3/32" HEX, LONG ARM	1
6	5/64" HEX WRENCH	1
7	STRIPPING BLADE	1

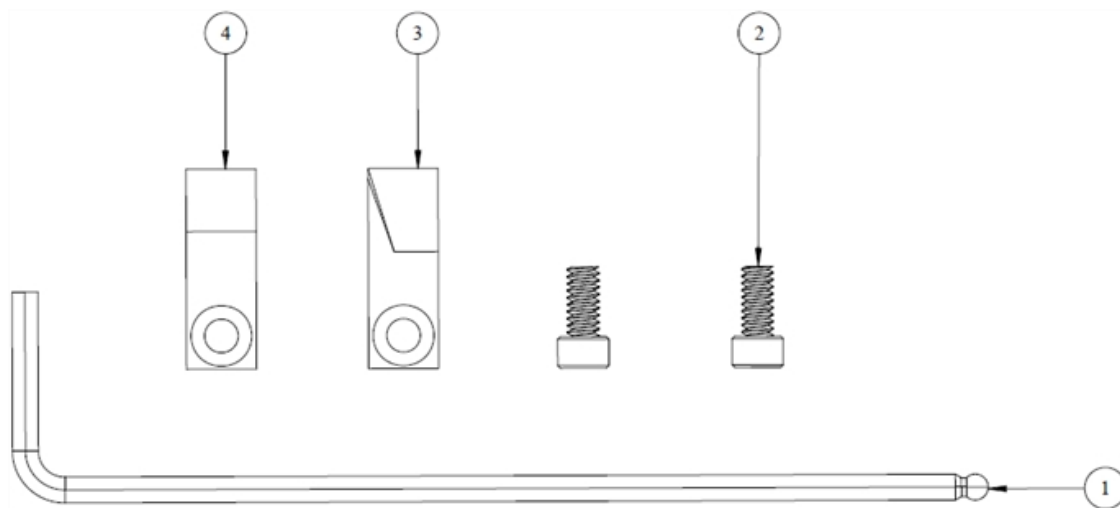




## RBK-SP-780

Replacement blade kit: SP-780

Item	Description	Qty.
1	WRENCH - 3/32" HEX, LONG ARM	1
2	SCREW - 4-40 X 1/4" LG SKT HD CAP	2
3	CUTTER LEFT - CT TOOL	1
4	CUTTER - JACKET STRIP TOOL	1

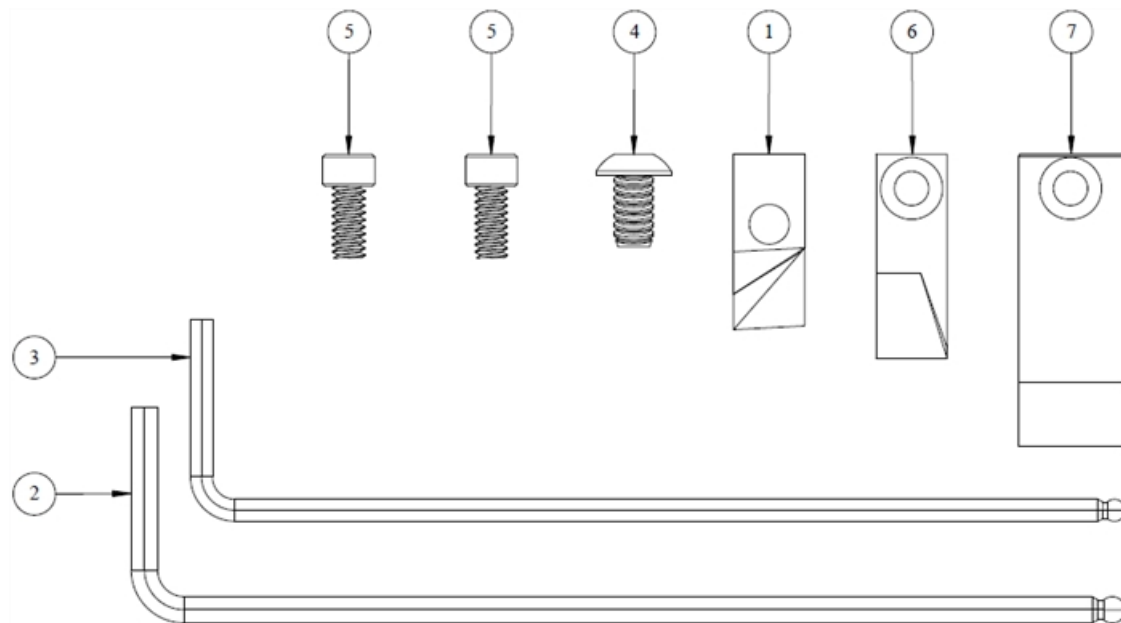




# RBK-SP-1480/1873

Replacement blade kit: SP-1480/1873

Item	Description	Qty.
1	STRIPPING BLADE	1
2	WRENCH - 3/32" HEX, LONG ARM	1
3	5/64" HEX WRENCH	1
4	6-32 X 1 1/4" BHCS	1
5	SCREW - 4-40 X 1/4" LG SKT HD CAP	2
6	CUTTER LEFT - CT TOOL	1
7	CUTTER-HELIAX COAXIAL CABLE	1

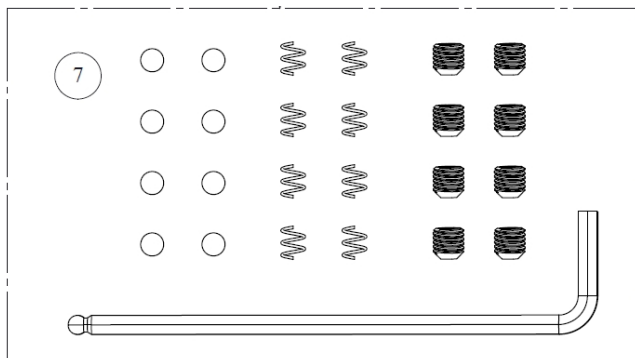
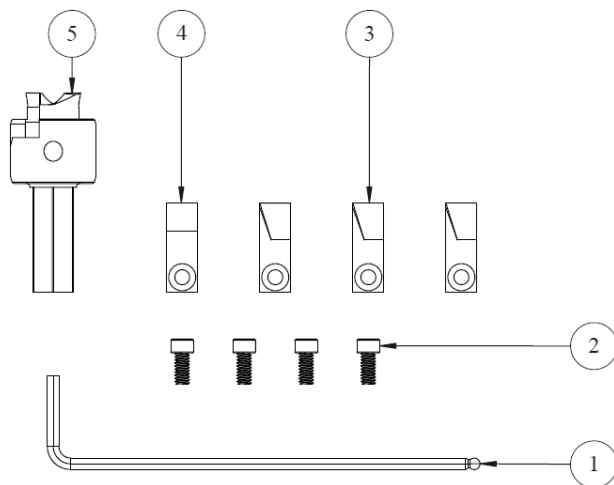




# RPK-SP-1/2-LDF4D

Replacement parts kit: SP-1/2-LDF4D

Item	Description	Qty.
1	WRENCH - 3/32" HEX, LONG ARM	1
2	SCREW - 4-40 X 1/4" LG SKT HD CAP	4
3	CUTTER LEFT - CT TOOL	3
4	CUTTER - JACKET STRIP TOOL	1
5	DRIVE U BIT	1
7	RBB-19	1

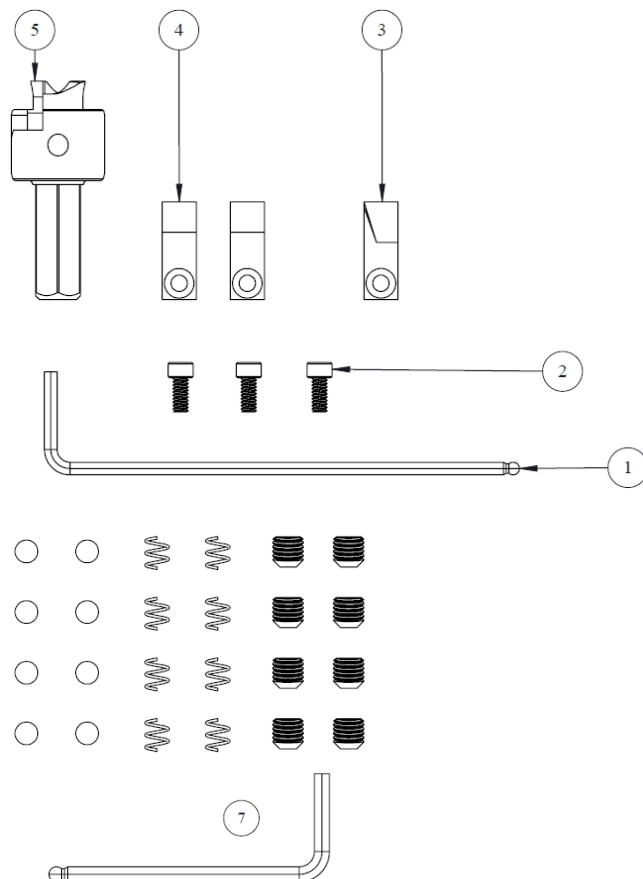




# RPK-SP-12PL-01

Replacement parts kit: SP-12PL-01

Item	Description	Qty.
1	WRENCH - 1/8" HEX, SHORT ARM	1
2	SCREW - 4-40 X 1/4" LG SKT HD CAP	3
3	CUTTER LEFT - CT TOOL	1
4	CUTTER - JACKET STRIP TOOL	2
5	DRIVE V1 BIT	1
7	RBB-19	1

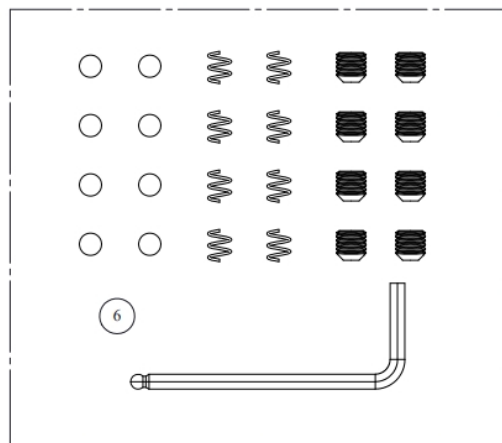
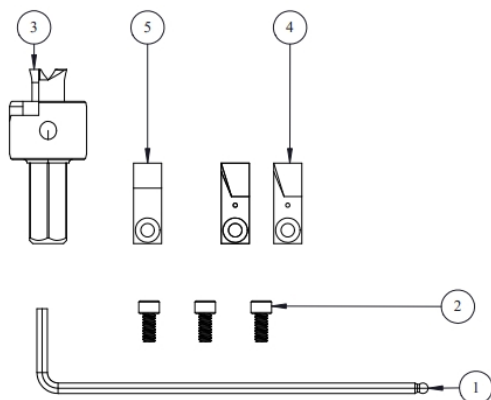




# RPK-SP-12S-01

Replacement parts kit: SP-12S-01

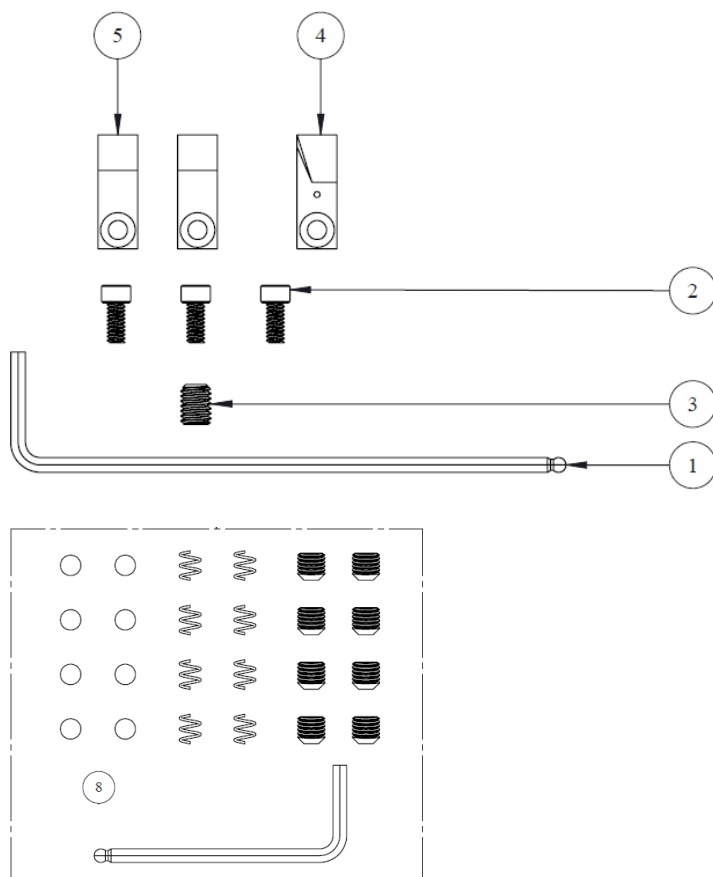
Item	Description	Qty.
1	WRENCH - 1/8" HEX, SHORT ARM	1
2	SCREW - 4-40 X 1/4" LG SKT HD CAP	3
3	DRIVE/CORE BIT 12S-01	1
4	CUTTER LEFT - CT TOOL	2
5	CUTTER - JACKET STRIP TOOL	1



# RPK-SP-12S-PL

Replacement parts kit: SP-12S/PL

Item	Description	Qty.
1	WRENCH - 1/8" HEX, SHORT ARM	1
2	SCREW - 4-40 X 1/4" LG SKT HD CAP	3
3	SCREW-10-32 X 1/4" LG SET	1
4	CUTTER LEFT - CT TOOL	1
5	CUTTER - JACKET STRIP TOOL	2
8	RBB-19	1

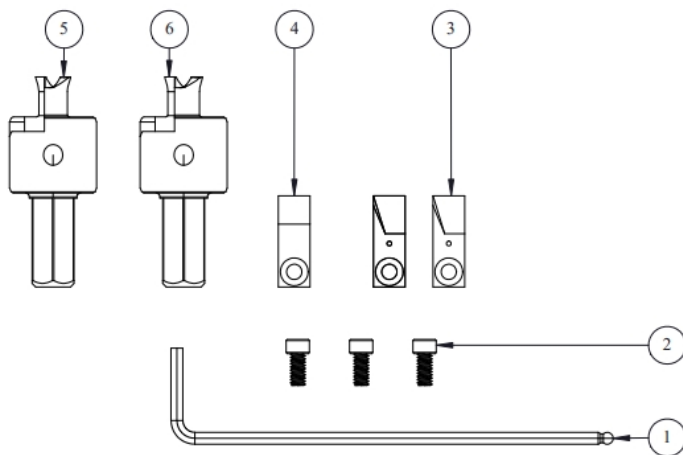




# RPK-SP-38S-01

Replacement parts kit: SP-38S-01

Item	Description	Qty.
1	3/32" HEX WRENCH	1
2	SCREW - 4-40 X 1/4" LG SKT HD CAP	3
3	CUTTER LEFT - CT TOOL	2
4	CUTTER - JACKET STRIP TOOL	1
5	CORE BIT, 38SA, DRILL DRIVE	1
6	CORE BIT, 38S, DRILL DRIVE	1

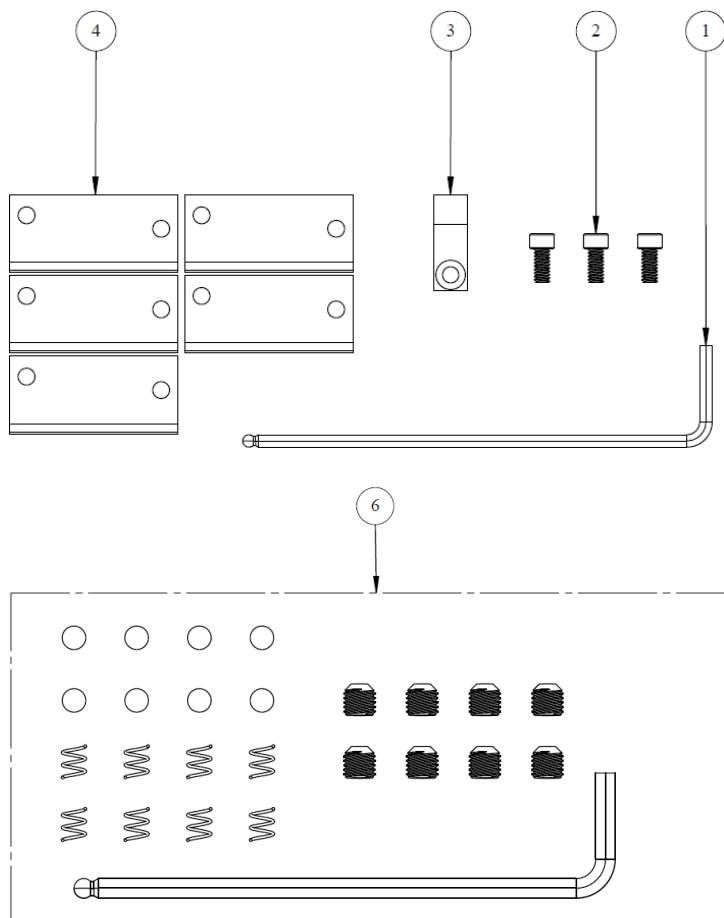




# RPK-SP-78

Replacement parts kit: SP-78

Item	Description	Qty.
1	3/32" HEX WRENCH	1
2	SCREW - 4-40 X 1/4" LG SKT HD CAP	3
3	CUTTER - JACKET STRIP TOOL	1
4	FACING BLADE	5
6	RBB-19	1

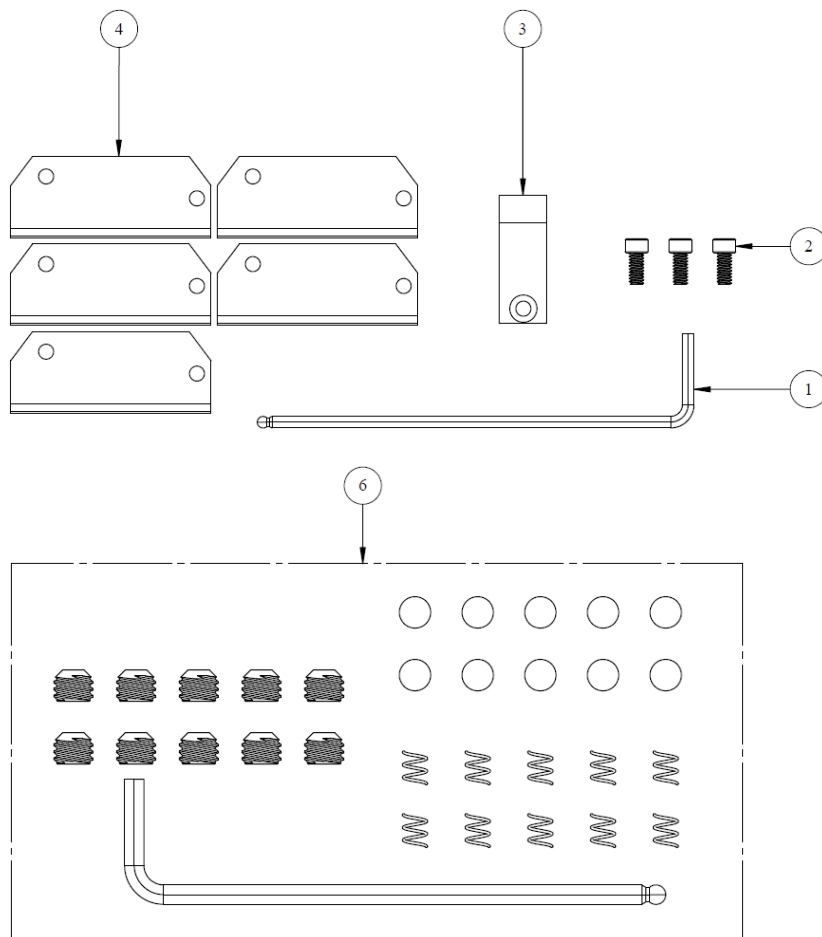




# RPK-SP-114

Replacement parts kit: SP-114

Item	Description	Qty.
1	3/32" HEX WRENCH	1
2	SCREW - 4-40 X 1/4" LG SKT HD CAP	3
3	CUTTER-HELIAX COAXIAL CABLE	1
4	FACING BLADE	5
6	RBB-25	1

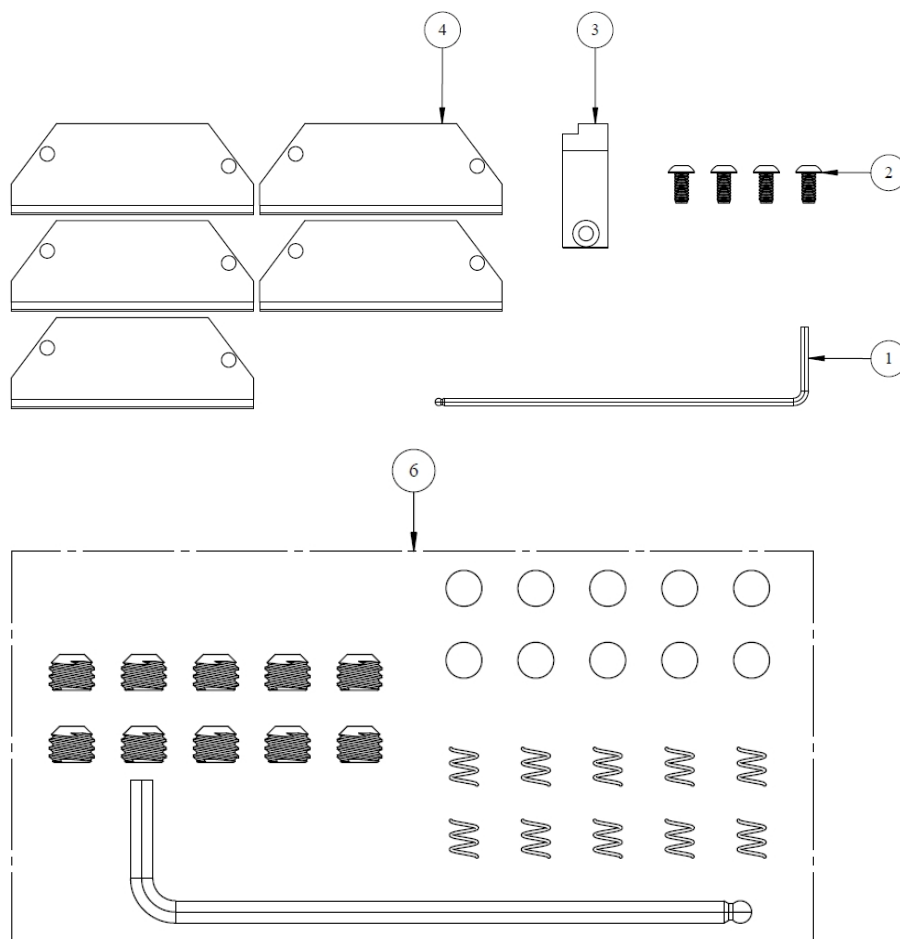




# RPK-SP-158

Replacement parts kit: SP-158

Item	Description	Qty.
1	1/16" HEX WRENCH	1
2	BH SOCKET CAP SCREW 4-40 X 25	4
3	CUTTER	1
4	FACING BLADE	5
6	RBB-25	1

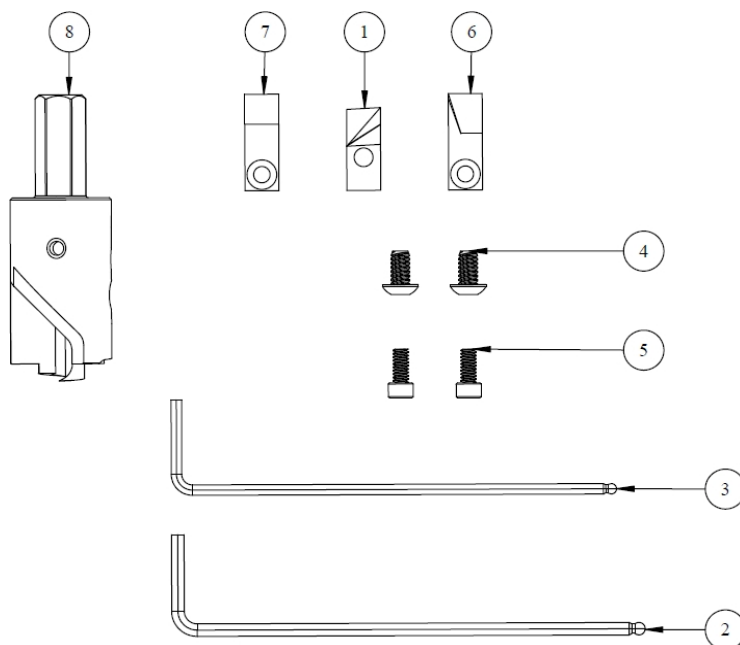




# RPK-SP-500

Replacement parts kit: SP-500

Item	Description	Qty.
1	STRIPPING BLADE	1
2	WRENCH - 3/32" HEX, LONG ARM	1
3	5/64" HEX WRENCH	1
4	6-32 X 1 1/4" BHCS	2
5	SCREW - 4-40 X 1/4" LG SKT HD CAP	2
6	CUTTER LEFT - CT TOOL	1
7	CUTTER - JACKET STRIP TOOL	1
8	DRIVE BIT	1

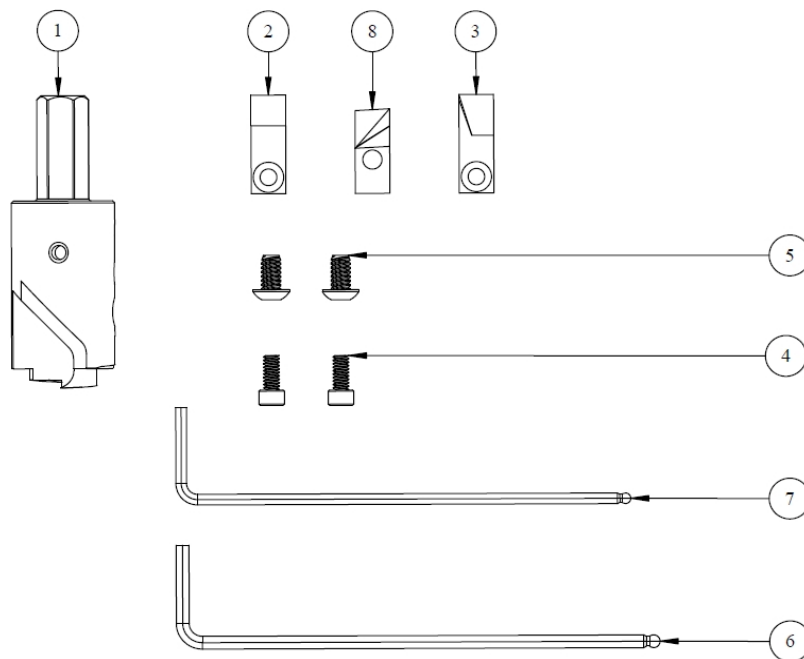




# RPK-SP-540

Replacement parts kit: SP-540

Item	Description	Qty.
1	CORING BIT	1
2	CUTTER - JACKET STRIP TOOL	1
3	CUTTER LEFT - CT TOOL	1
4	SCREW - 4-40 X 1/4" LG SKT HD CAP	2
5	6-32 X 1 1/4" BHCS	2
6	WRENCH - 3/32" HEX, LONG ARM	1
7	5/64" HEX WRENCH	1
8	STRIPPING BLADE	1







# RPK-SP-1873

Replacement parts kit: SP-1873

Item	Description	Qty.
1	STRIPPING BLADE	1
2	WRENCH - 3/32" HEX, LONG ARM	1
3	5/64" HEX WRENCH	1
4	6-32 X 1 1/4" BHCS	1
5	SCREW - 4-40 X 1/4" LG SKT HD CAP	2
6	CUTTER LEFT - CT TOOL	1
7	CUTTER-HELIAX COAXIAL CABLE	1
8	DRIVE/BIT	1

