



MX10FRO860-B02

NWAV™ X-Pol Ten-Port Antenna

X-Pol Ten-Port 8 ft, 60° Fast Roll Off, with Smart Bias Ts, 698-4200 MHz:

2 ports 698-894 MHz, 4 ports 1695-2200 MHz, and 4 ports 3400-4200 MHz

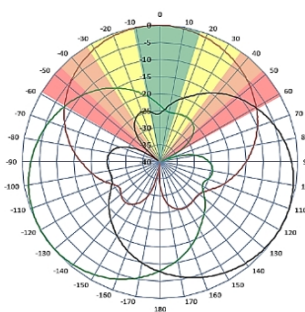
- Fast Roll Off (FRO™) azimuth beam pattern improves Intra- and Inter-cell SINR
- Excellent passive intermodulation (PIM) performance reduces harmful interference.
- Fully integrated (iRETs) with independent RET control for low band and mid band
- FET configured with internal RET for high band & ease of future network optimization.
- SON-Ready array spacing supports beamforming capabilities
- Suitable for 3G, 4G, and 5G interface technologies
- Integrated Smart Bias-Ts reduce leasing costs
- Optimized CBRS radiation pattern for improved RSRP



Fast Roll-Off antennas increase data throughput without compromising coverage

The horizontal beam produced by Fast Roll-Off (FRO) technology increases the Signal to Interference & Noise Ratio (SINR) by eliminating overlap between sectors

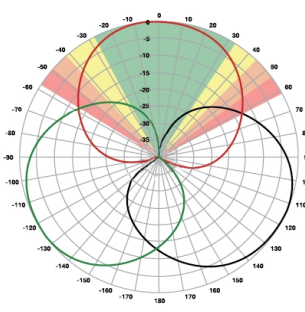
Non-FRO antenna



Large traditional antenna pattern overlap creates harmful interference.

JMA's FRO antenna pattern minimizes overlap, thereby minimizing interference.

JMA FRO antenna



LTE throughput	SINR	Speed (bps/Hz)	Speed increase	CQI
Excellent	>18	>4.5	333+%	8-10
Good	15-18	3.3-4.5	277%	6-7
Fair	10-15	2-3.3	160%	4-6
Poor	<10	<2	0%	1-3

The LTE radio automatically selects the best throughput based on measured SINR.

Electrical specification (minimum/maximum)	Ports 1, 2		Ports 3, 4, 5, 6		
Frequency bands, MHz	698-806	806-894	1695-1880	1850-1990	1920-2200
Polarization	± 45°		± 45°		
Average gain over all tilts, dBi	15.9	16.2	17.4	17.9	18.0
Horizontal beamwidth (HBW), degrees ¹	61.0	57.0	58.0	55.0	55.5
Front-to-back ratio, co-polar power @180°± 30°, dB	>22.0	>21.0	>25.0	>25.0	>25.0
X-Pol discrimination (CPR) at boresight, dB	>15.0	>15.0	>15	>15	>15
Vertical beamwidth (VBW), degrees ¹	9.5	8.5	5.7	5.3	5.1
Electrical downtilt (EDT) range, degrees	2-12		0-9		
First upper side lobe (USLS) suppression, dB ¹	≤-15.0	≤-15.0	≤-16.0	≤-16.0	≤-16.0
Cross-polar isolation, port-to-port, dB ¹	25	25	25	25	25
Max VSWR / return loss, dB	1.5:1 / -14.0		1.5:1 / -14.0		
Max passive intermodulation (PIM), 2x20W carrier, dBc	-153		-153		
Max input power per any port, watts	300		250		
Total composite power all ports (1-10), watts	1500				



MX10FRO860-B02

NWAV™ X-Pol Ten-Port Antenna

¹ Typical value over frequency and tilt

Electrical specification (minimum/maximum)	Ports 7, 8, 9, 10			
Frequency bands, MHz	3400-3550	3550-3700	3700-3950	3950-4200
Polarization	± 45°			
Average gain over all tilts, dBi	13.5	13.6	13.8	14.1
Horizontal beamwidth (HBW), degrees	65	62	60	58
Front-to-back ratio, co-polar power @180°± 30°, dB	>25	>25	>25	>25
Vertical beamwidth (VBW), degrees ¹	20.1	19.9	19.7	19.4
Electrical downtilt (EDT) range, degrees	2-12			
First upper side lobe (USLS) suppression, dB ¹	≤-18	≤-18	≤-18	≤-18
Cross-polar isolation, port-to-port, dB ¹	25	25	25	25
Max VSWR / return loss, dB	1.5:1 / -14.0			
Max input power per any port, watts	200			
Total composite power all ports (1-10), watts	1500			

¹ Typical value over frequency and tilt

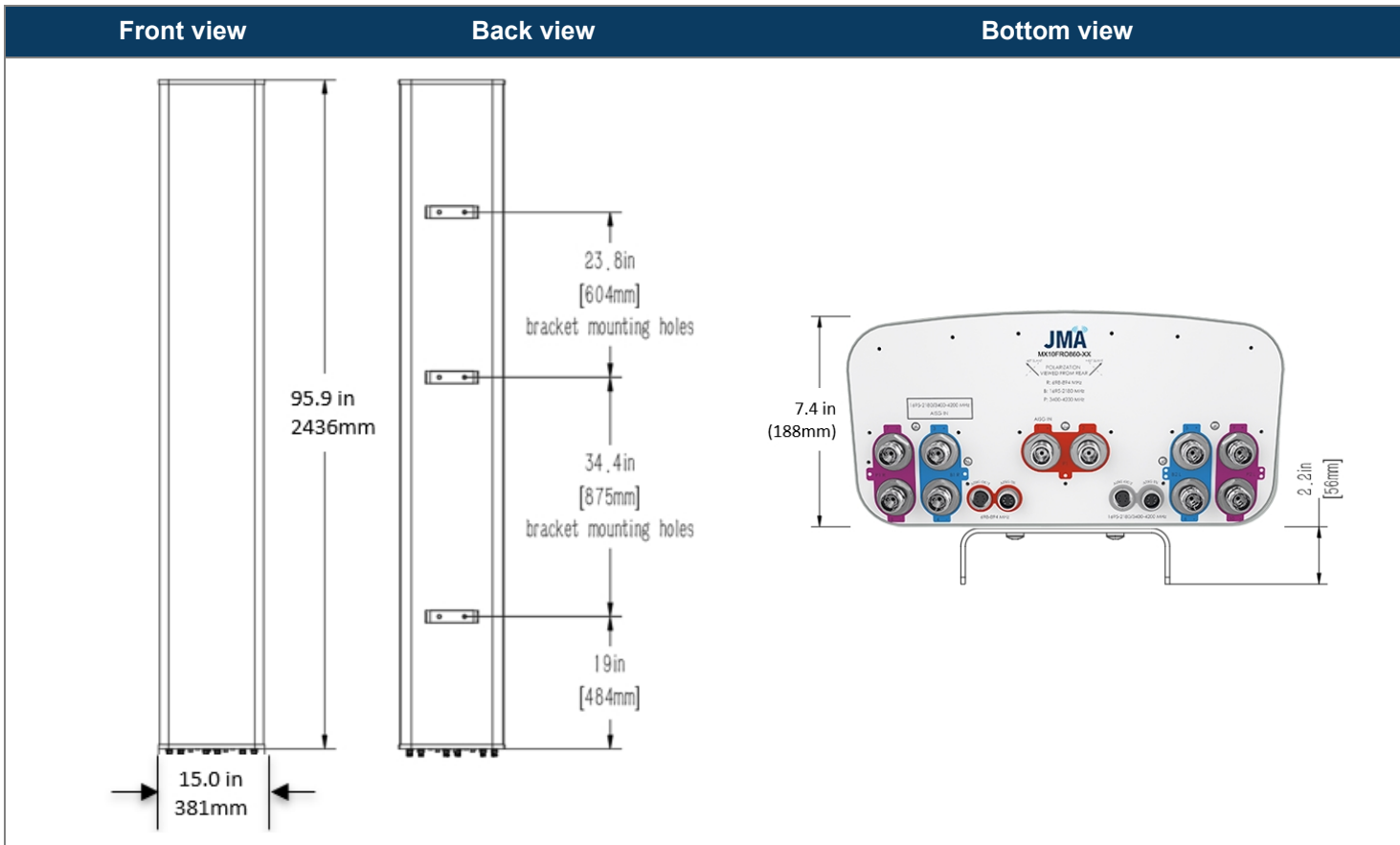
Ordering information	
Antenna model	Description
MX10FRO860-B02	8F X- Pol 10 Port FRO 60° 2-12°/ 0-9°/ 2-12°, 4.3-10 & SBTs
Optional accessories	
AISG cables	M/F cables for AISG connections
PCU-1000 RET controller	Stand-alone controller for RET control and configurations
91900314-03	Dual Mount Bracket (see 91900314 bracket document for details)



MX10FRO860-B02

NWAV™ X-Pol Ten-Port Antenna

Mechanical specifications	
Dimensions height/width/depth, inches (mm)	95.9/ 15.0/ 7.4 (2436/ 381.0/ 188.0)
Shipping dimensions length/width/height, inches (mm)	106/ 20/ 14.5 (2692/ 508/ 368)
No. of RF input ports, connector type, and location	10 x 4.3-10 female, bottom
RF connector torque	96 lbf-in (10.85 N·m or 8 lbf-ft)
Net antenna weight, lb (kg)	66.0 (29.9)
Shipping weight, lb (kg)	114.4 (51.9)
Antenna mounting and downtilt kit included with antenna	91900318, 91900319 (middle bracket)
Net weight of the mounting and downtilt kit, lb (kg)	26 (11.82)
Range of mechanical up/down tilt	-2° to 12°
Rated wind survival speed, mph (km/h)	150 (241)
Frontal and lateral wind loading @ 150 km/h, lbf (N)	212.8 (946.6), 77.0 (342.5)
Equivalent flat plate @ 100 mph and Cd=2, sq ft	2.63
EPA frontal and lateral, ft ² , (m ²)	9.6 (0.89), 3.5 (0.33)

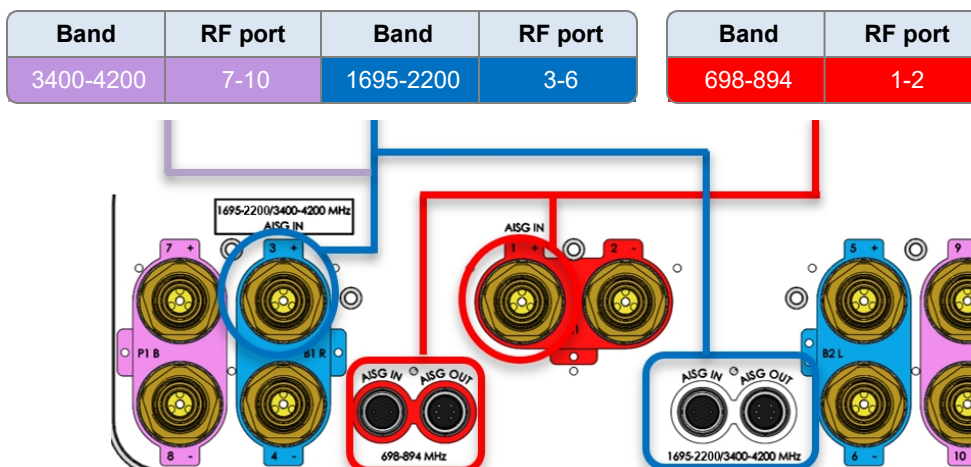


Remote electrical tilt (RET 1000) information

RET location	Integrated into antenna
RET interface connector type	8-pin AISG connector per IEC 60130-9 or RF port bias-t
RET connector torque	Min 0.5 N·m to max 1.0 N·m (hand pressure & finger tight)
RET interface connector quantity	2 pairs of AISG male/female connectors and 2 RF port bias-ts
RET interface connector location	Bottom of the antenna
Total no. of internal RETs 698-894 MHz	1
Total no. of internal RETs 1695-2200 MHz	1
Total no. of internal RETs 3400-4200 MHz	1
RET input operating voltage, vdc	10-30
RET max power consumption, idle state, W	≤ 2.0
RET max power consumption, normal operating conditions, W	≤ 13.0
RET communication protocol	AISG 2.0 / 3GPP

RET and RF connector topology

Each RET device can be controlled either via the designated external AISG connector or RF smart bias-t port as shown below:



Note: The RET Device for 3400-4200 MHz is connected via the 1695-2200 Port 3 Bias T port or 1695-2200/3400-4200 MHz AISG ports.

Array topology

5 sets of radiating arrays

- R1: 698-894 MHz
- B1: 1695-2200 MHz
- B2: 1695-2200 MHz
- P1: 3400-4200 MHz
- P2: 3400-4200 MHz

Band	RF port
698-894	1-2
1695-2200	3-4
1695-2200	5-6
3400-4200	7-8
3400-4200	9-10

