

MX04FIT365-01

NWAV™ X-Pol Panel Antenna

4-Port 30 in. FIT (Form in Tighter), 3550 - 3700 MHz

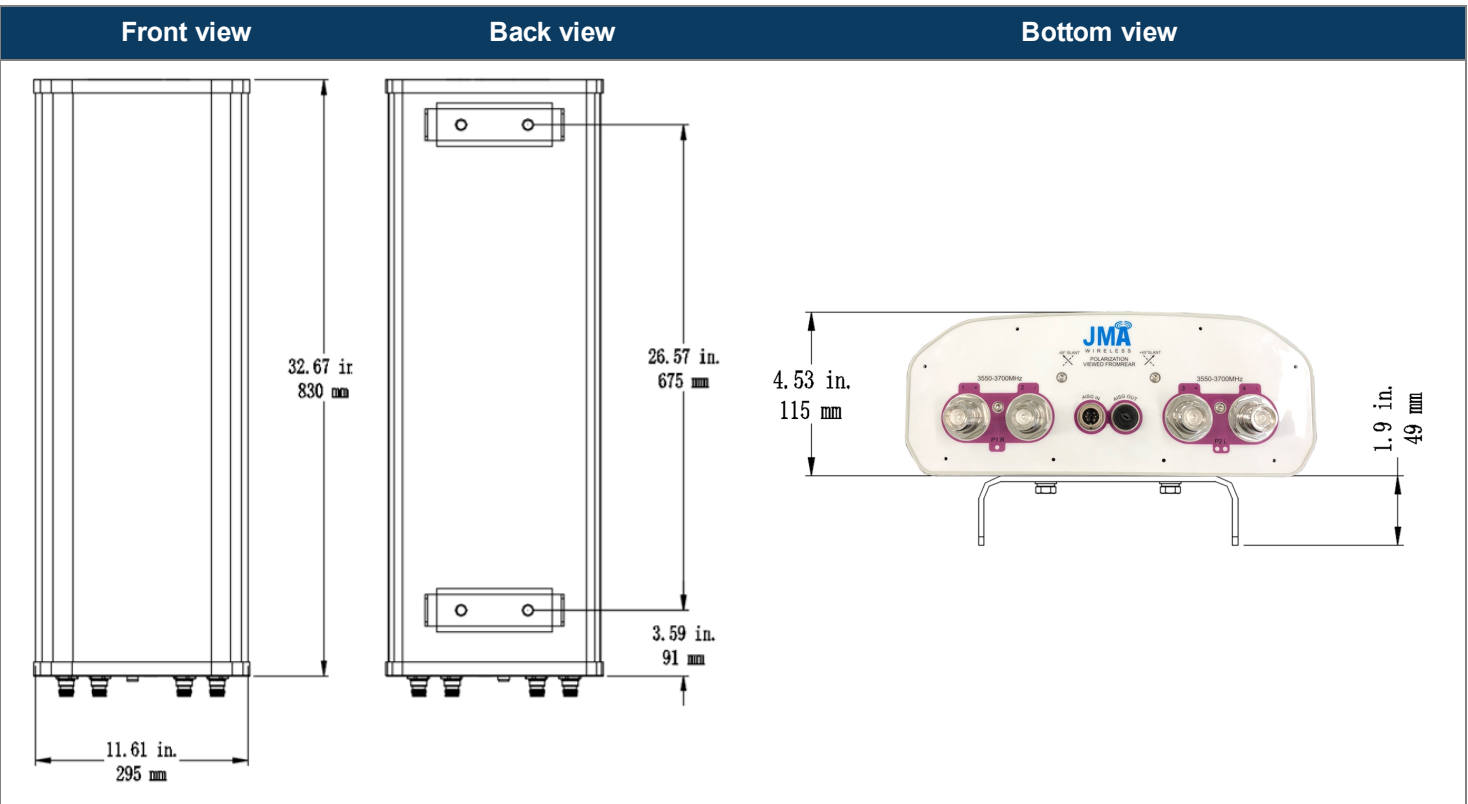
- X-Pol, small cell, panel antenna
- Suitable for pole or building mount
- 4x4 MIMO for CBRS
- Integrated (internal RET) for remote electrical tilt control



Electrical specification (minimum/maximum)	Ports 1, 2, 3, 4
Frequency bands, MHz	3550-3700
Polarization	$\pm 45^\circ$
Average gain over all tilts, dBi	17.0
Horizontal beamwidth (HBW), degrees	65.0
Front-to-back ratio, co-polar power @ $180^\circ \pm 30^\circ$, dB	25
X-Pol discrimination (CPR) at boresight, dB	>18
Vertical beamwidth (VBW), degrees ¹	7.3
Remote electrical downtilt (EDT) range, degrees	0-10
First upper side lobe (USLS) suppression, dB ¹	17
Cross-polar isolation, port-to-port, dB ¹	25
Max VSWR / return loss, dB	1.5:1 / -14.0
Max passive intermodulation (PIM), 2x20W carrier, dBc	-140
Max input power per any port, watts	100

¹ Typical value over frequency and tilt

Mechanical specifications	
Dimensions height/width/depth, inches (mm)	32.67/ 11.6/ 4.53 (830/ 295/ 115)
Shipping dimensions length/width/height, inches (mm)	37.4/ 16.9/ 11.8 (950/ 430/ 300)
No. of RF input ports, connector type, and location	4 x 4.3-10 female, bottom
RF connector torque	96 lbf-in (10.85 N·m or 8 lbf-ft)
Net antenna weight, lb (kg)	18.2 (8.26)
Weight with supplied pipe mount bracket, lb (kg)	21.5 (9.76)
Shipping weight, lb (kg)	44.1 (20)
Rated wind survival speed, mph (km/h)	150 (241)
Frontal wind loading @ 150 km/h, lbf (N)	56.9



Ordering information	
Antenna model	Description
MX04FIT365-01	30 inch panel antenna, 4 ports CBRS with RET
Mounting kit (included)	91900318 BRACKET KIT, range of mechanical up/down tilt -2° to 12°
Optional accessories	
AISG cables	M/F cables for AISG connections
PCU-1000 RET controller	Stand-alone controller for RET control and configurations

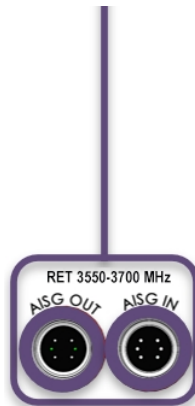
Remote electrical tilt (RET 1000) information

RET location	Integrated into antenna
RET interface connector type	8-pin AISG connector per IEC 60130-9
RET connector torque	Min 0.5 N·m to max 1.0 N·m (hand pressure & finger tight)
RET interface connector quantity	1 pair of AISG male/female connectors
RET interface connector location	Bottom of the antenna
Total no. of internal RETs	1
RET input operating voltage, vdc	10-30
RET max power consumption, idle state, W	≤ 2.0
RET max power consumption, normal operating conditions, W	≤ 13.0
RET communication protocol	AISG 2.0 / 3GPP

RET and RF connector topology

Each RET device can be controlled either via the designated external AISG connector or RF port as shown below:

RET device	Band	RF port
1	3550-3700	1-4



Array topology

2 sets of radiating arrays

P1: 3550-3700 MHz
P2: 3550-3700 MHz

Band	RF port
3550-3700	1-4

