



Stadium Antenna (XGU-*)

Weep hole modification guide

Overview of weep hole additions

- To help create new weep holes on JMA stadium antennas (XGU-* models) this guide was created for alternations made directly in the field
- Because there are many potential tilt and install angles this guide allows for on-the-spot judgments to be made about where the ideal placement for new weeps holes may be – this guide will assist with avoiding damage to the antenna itself while drilling new holes
- This guide includes:
 - 1) A guideline of key parameters for drilling new weep holes into the stadium antennas including widths for new holes, clearance for drill depth, etc.
 - 2) A drawing of the front of the stadium antenna showing what areas on the radome should be avoided when drilling, as elements of the antenna could be damaged

Key details for drilling weep holes

		Notes
Hole Diameter		Hole should be created using single drill with a 1/8" bit
# of weep holes		Minimum of 4 weep holes nearest to the low point as possible
Drill depth		Drill has to go only ¼" deep drill a complete hole in the Radome (the Radome is only .100" thick)
Re-sealing holes		Recommended to use outdoor Silicone to seal the existing weep holes that will not be needed
Considerations	Hard stop	Setting a ¼" hard stop on the drill bit is encouraged to limit risk of over-drilling
	Danger zones	If it is required to drill in highlighted danger zones the maximum clearance is ¼"
	Side of radome	There are no danger zones if drilling from side of radome but drilling should be limited to ¼" to reduce risk

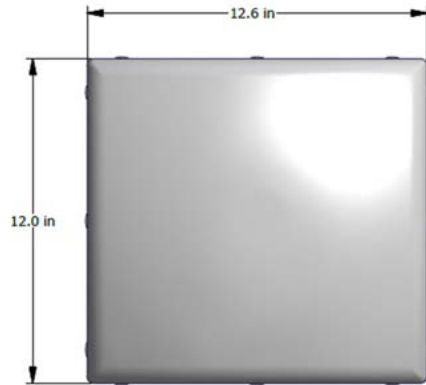
Stadium antenna guide table of contents

Model number	Page
XGU-165-I	5
XGU-FRO-124-I	6
XGU-FRO-128-I	7
XGU-FRO-130-I	8
XGU-FRO-230-I	9
XGU-465-I	10

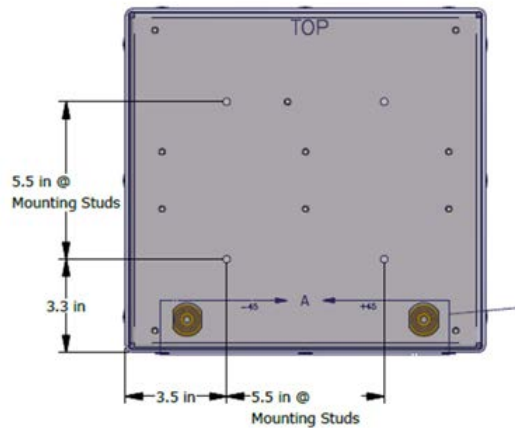
XGU-165-I weep hole modifications

Specs of antenna

Top of antenna

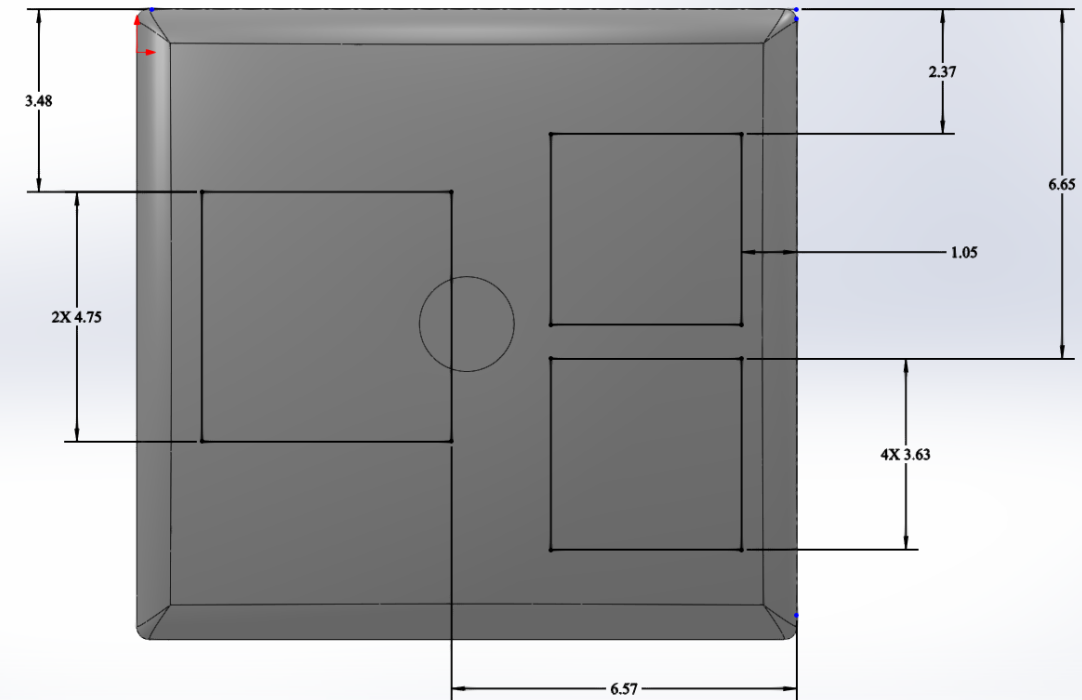


Top of antenna



Danger zones for drilling – showing front of radome

Top of antenna



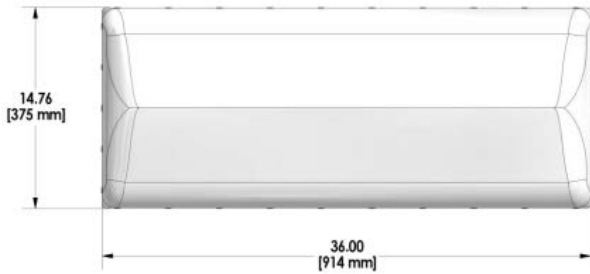
Danger zone –
Advised to not
drill within
these borders

XGU-FRO-124-I weep hole modifications

Specs of antenna

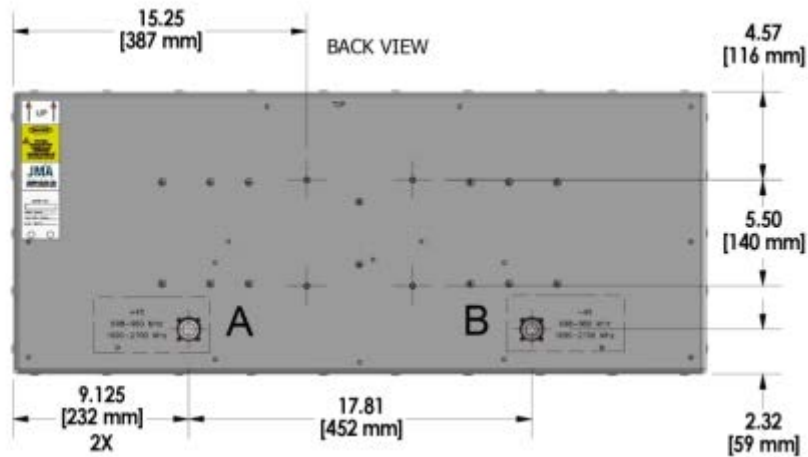
Top of antenna

Front view



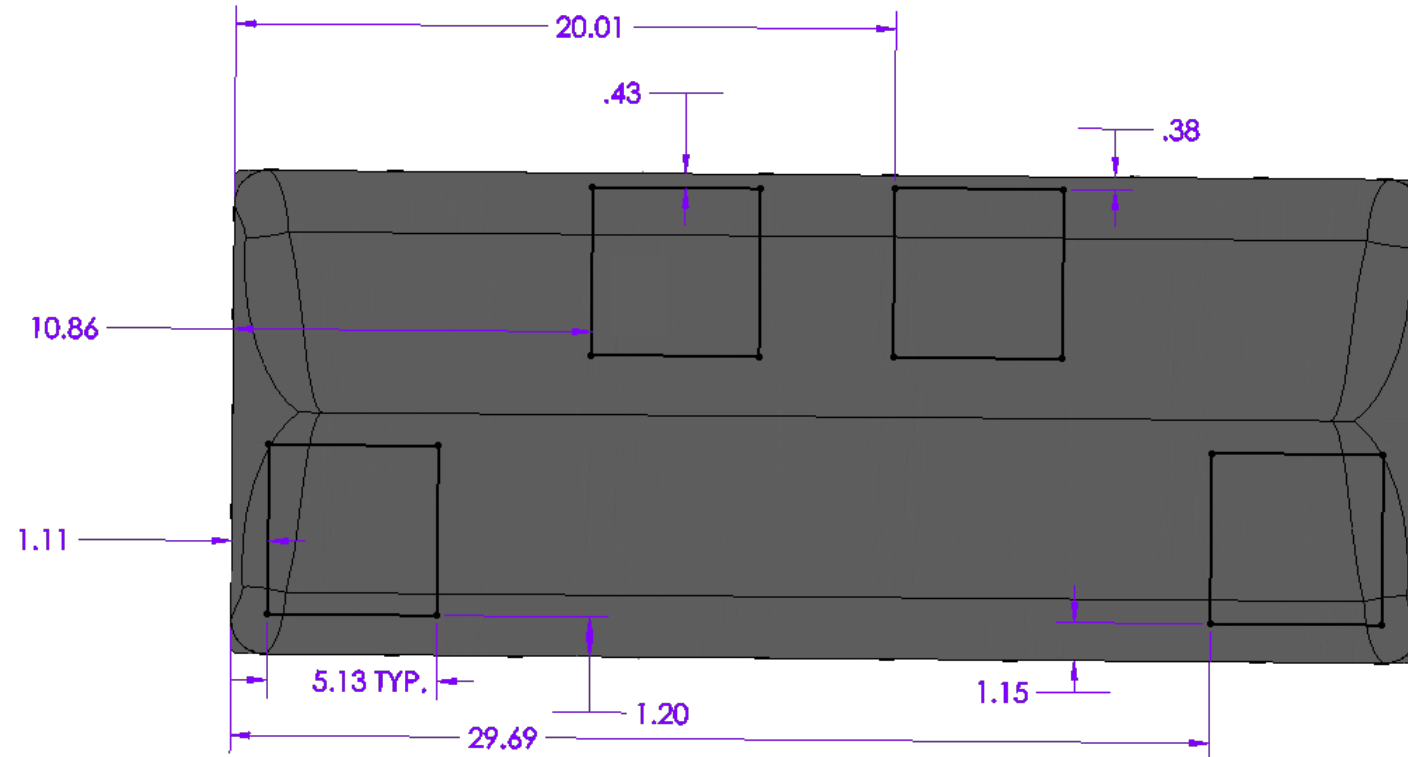
Top of antenna

Back view



Danger zones for drilling – showing front of radome

Top of antenna

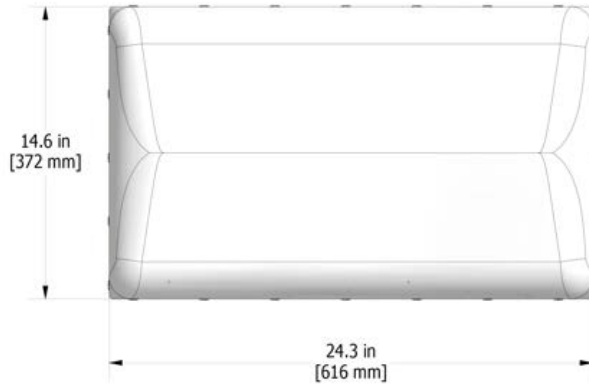


Danger zone –
Advised to not
drill within
these borders

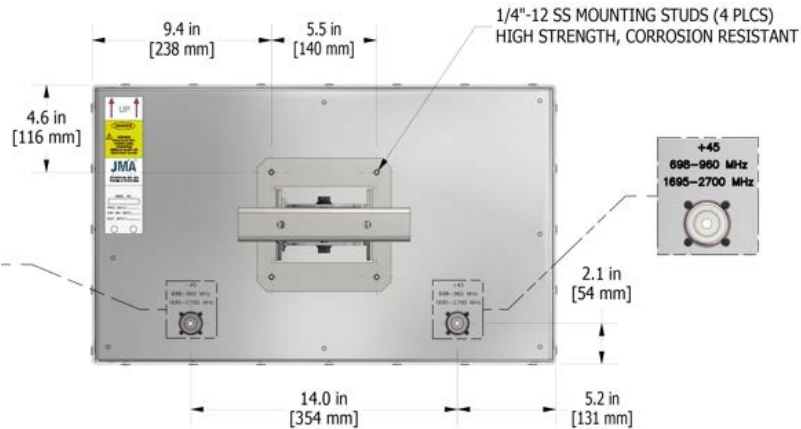
XGU-FRO-128-I weep hole modifications

Specs of antenna

Top of antenna

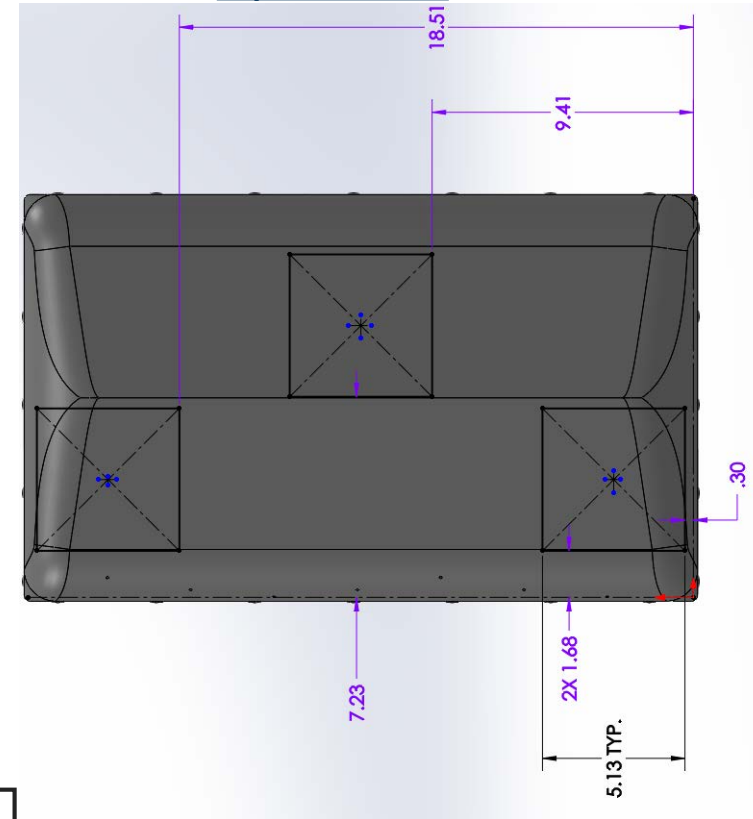


Top of antenna



Danger zones for drilling – showing front of radome

Top of antenna



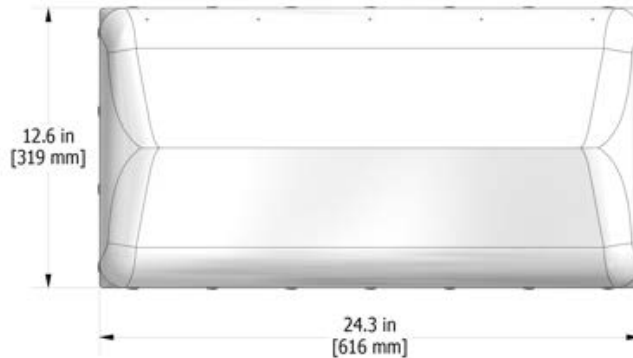
Danger zone –
Advised to not
drill within
these borders

XGU-FRO-130-I weep hole modifications

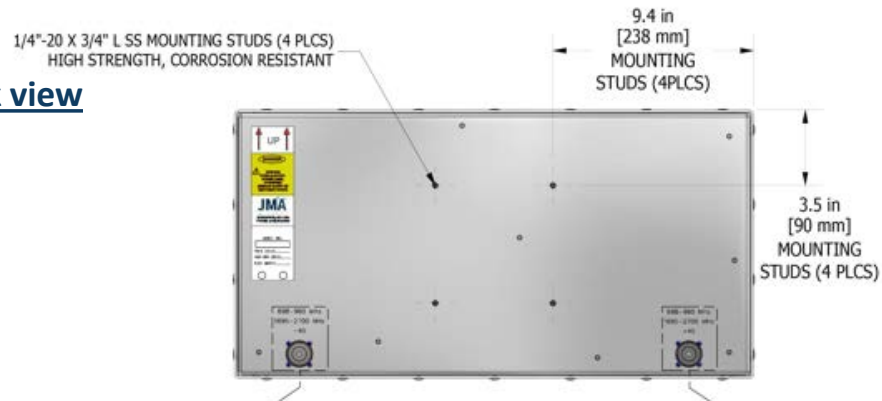
Specs of antenna

Top of antenna

Front view

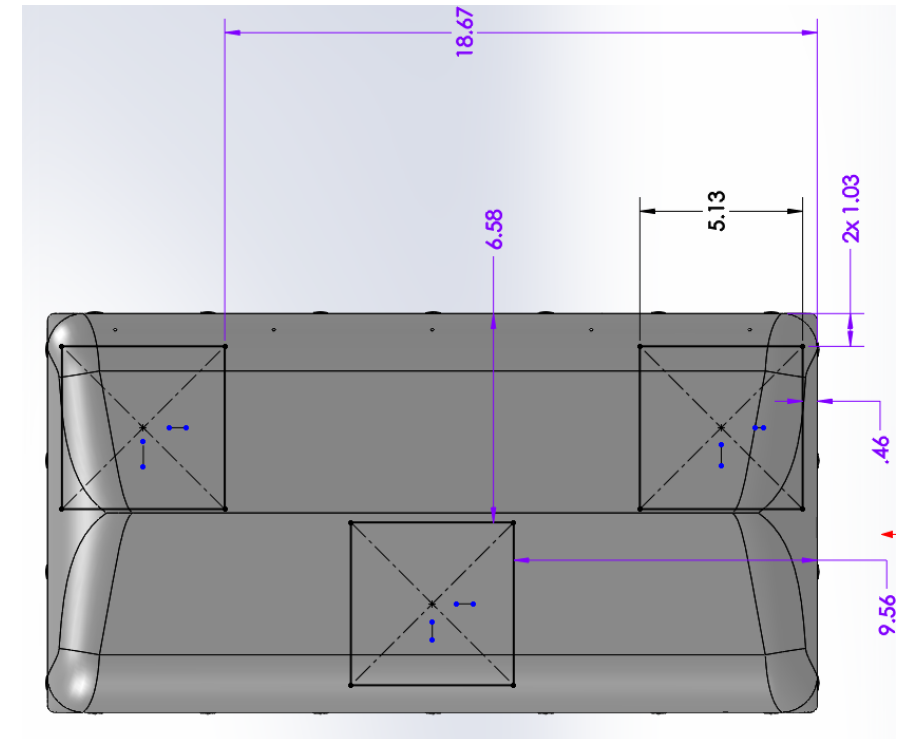


Top of antenna



Danger zones for drilling – showing front of radome

Top of antenna

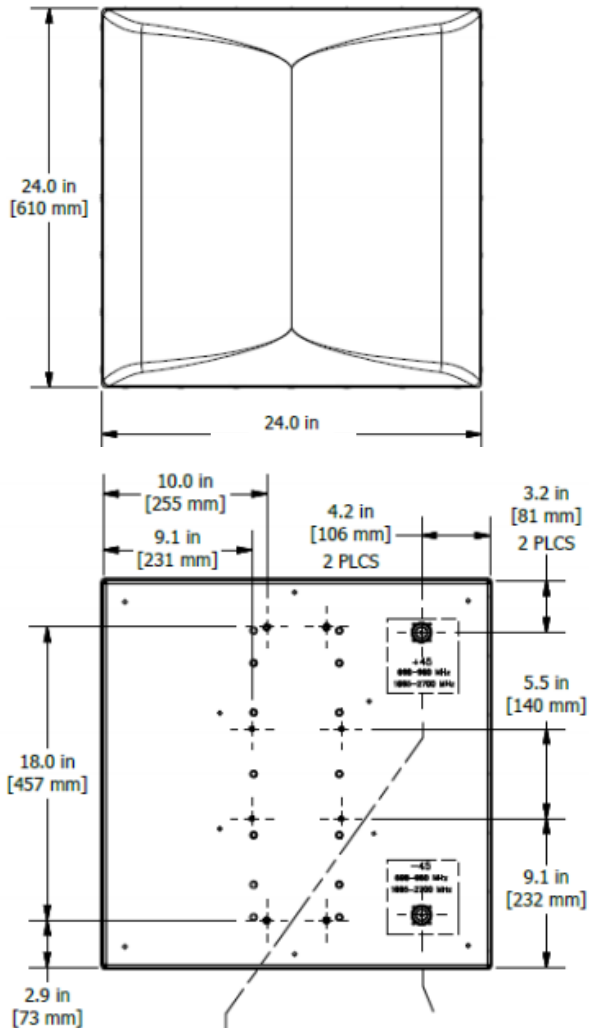


Danger zone –
Advised to not
drill within
these borders

XGU-FRO-230-I weep hole modifications

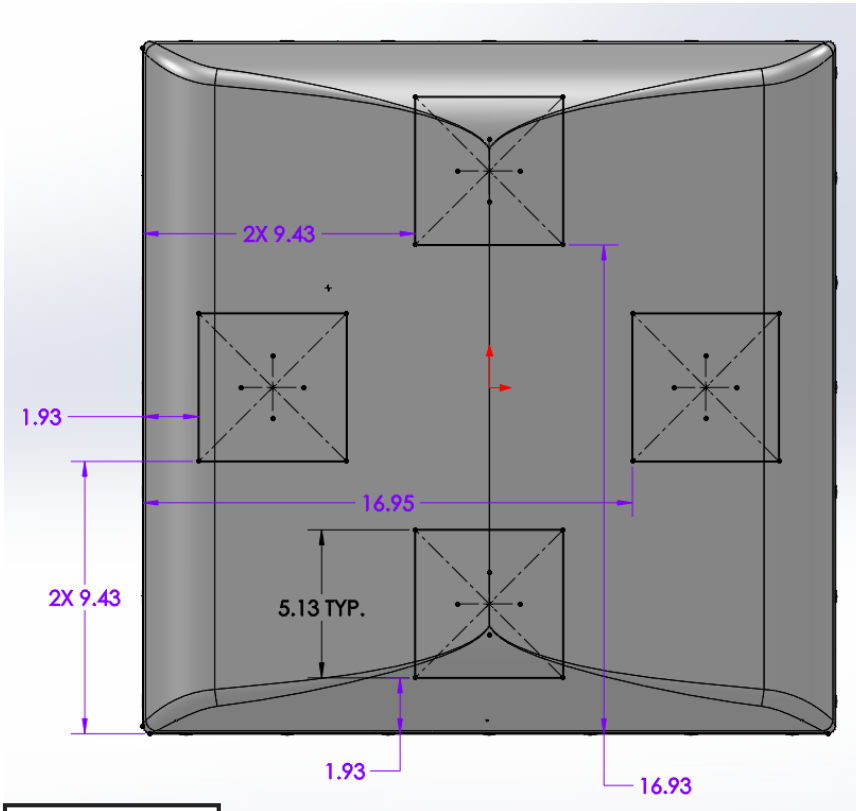
Specs of antenna

Top of antenna



Danger zones for drilling – showing front of radome

Top of antenna



Danger zone –
Advised to not
drill within
these borders

XGU-465-I weep hole modifications

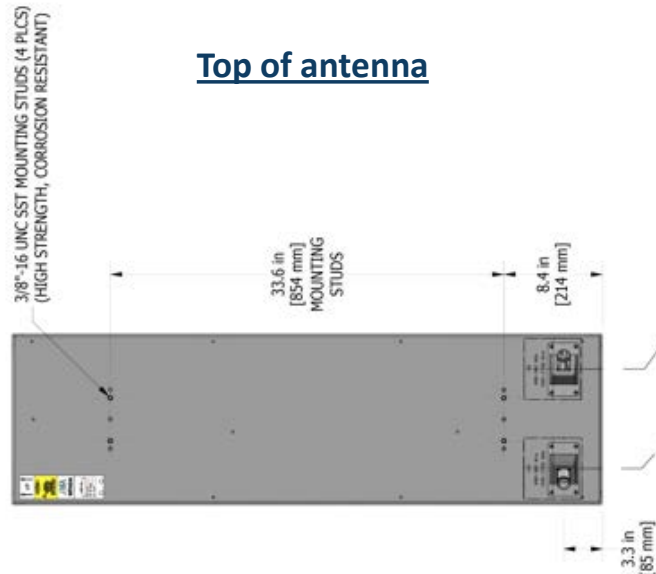
Specs of antenna

Top of antenna

Front view

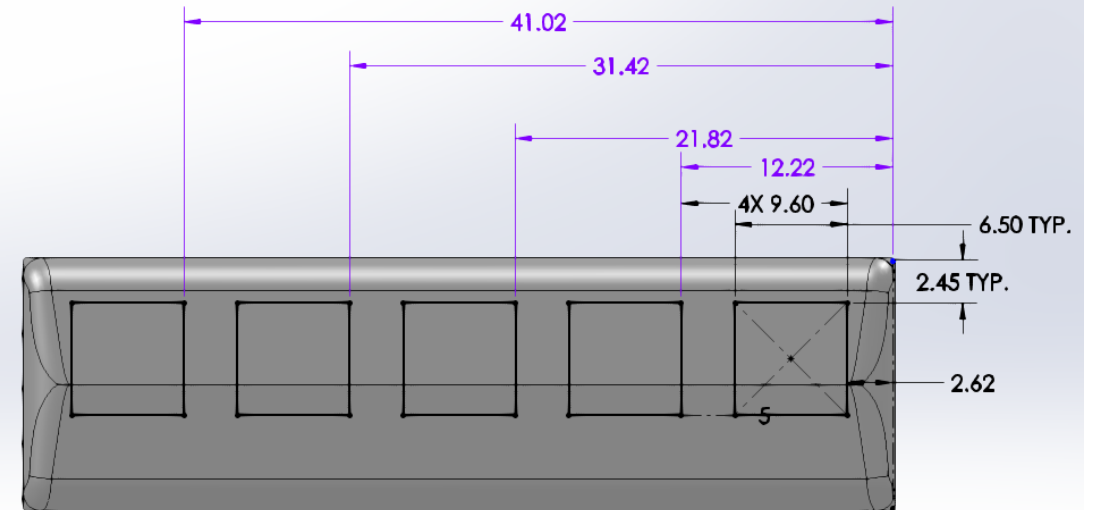


Top of antenna



Danger zones for drilling – showing front of radome

Top of antenna



Danger zone –
Advised to not
drill within
these borders