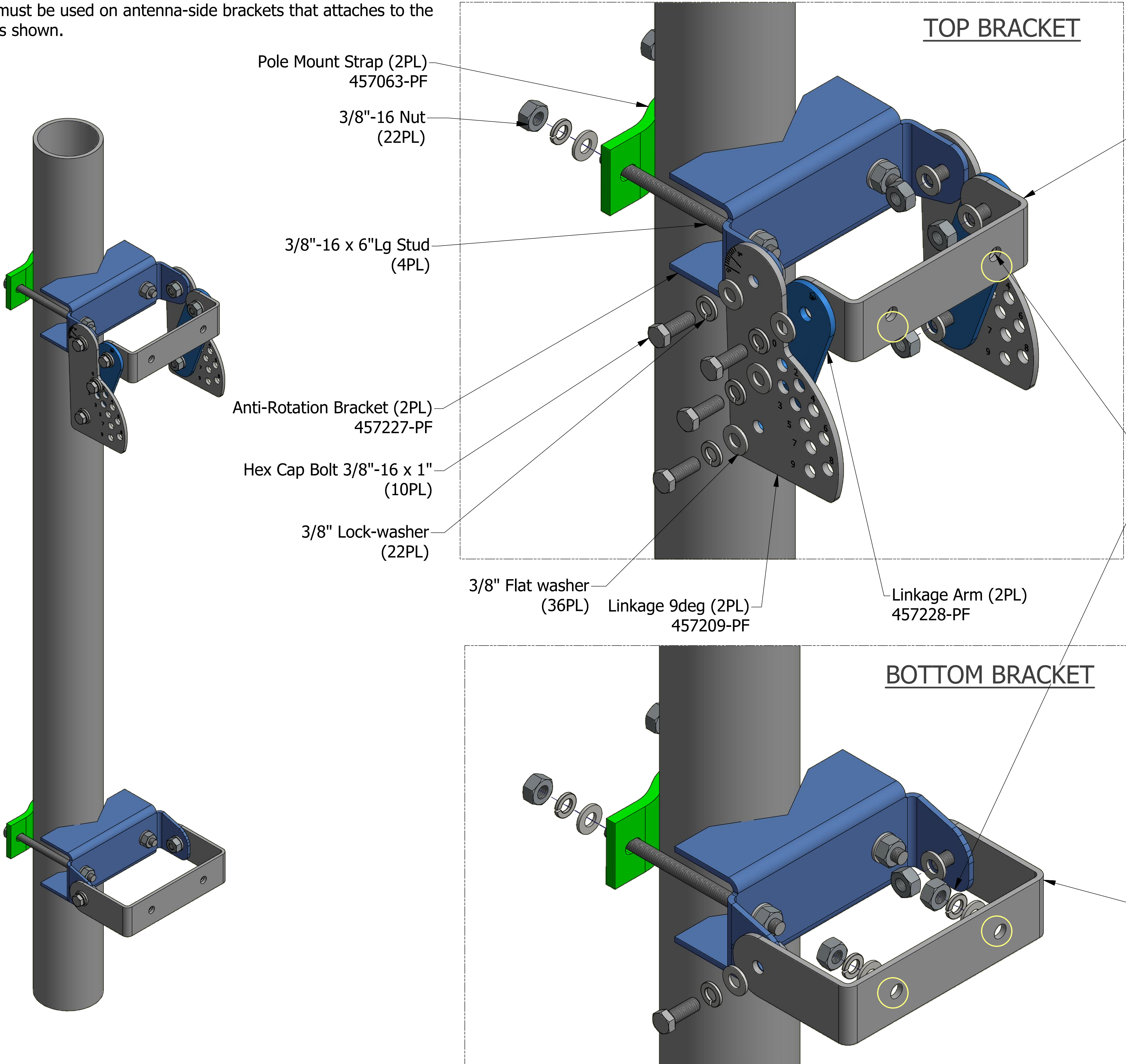
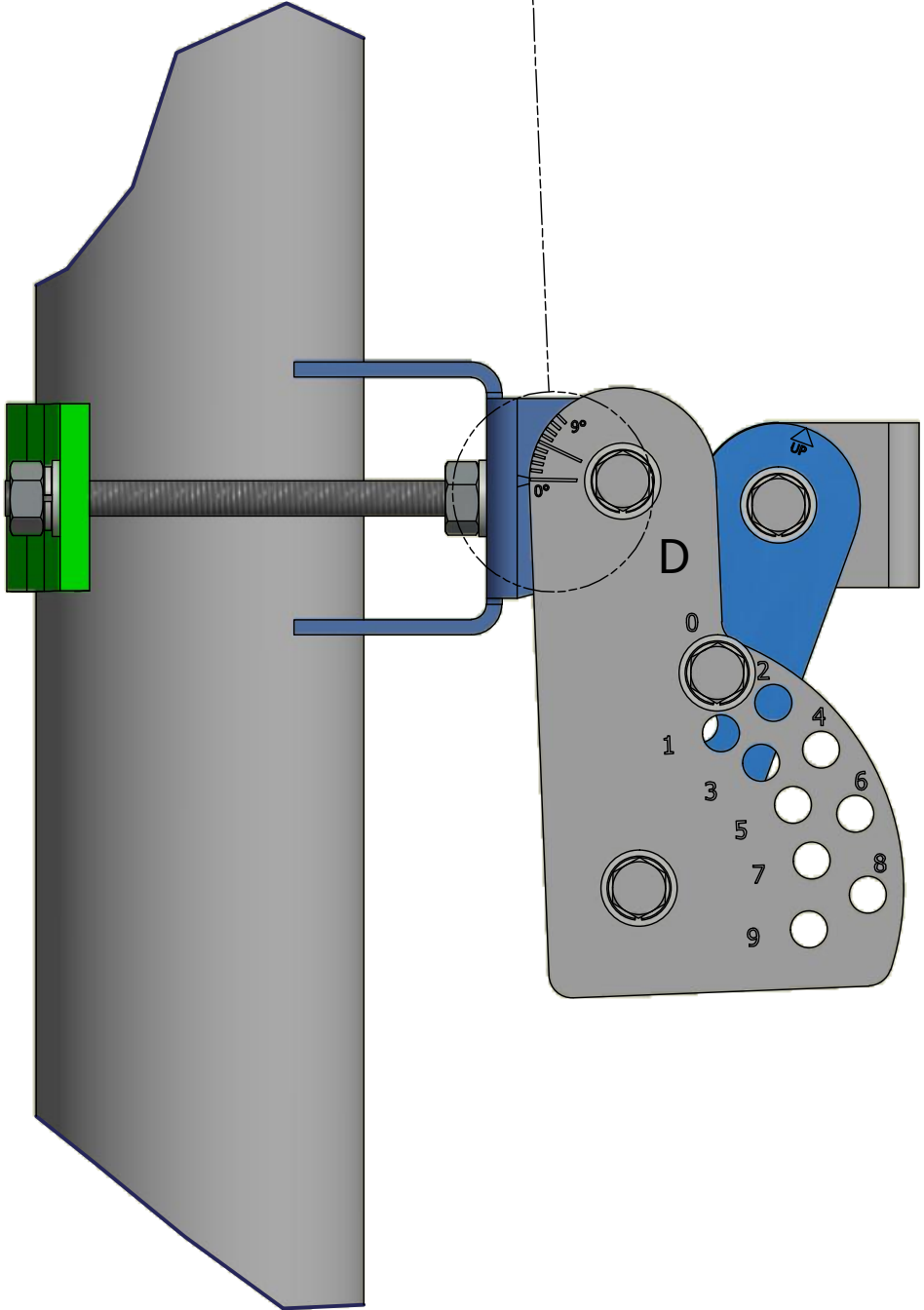
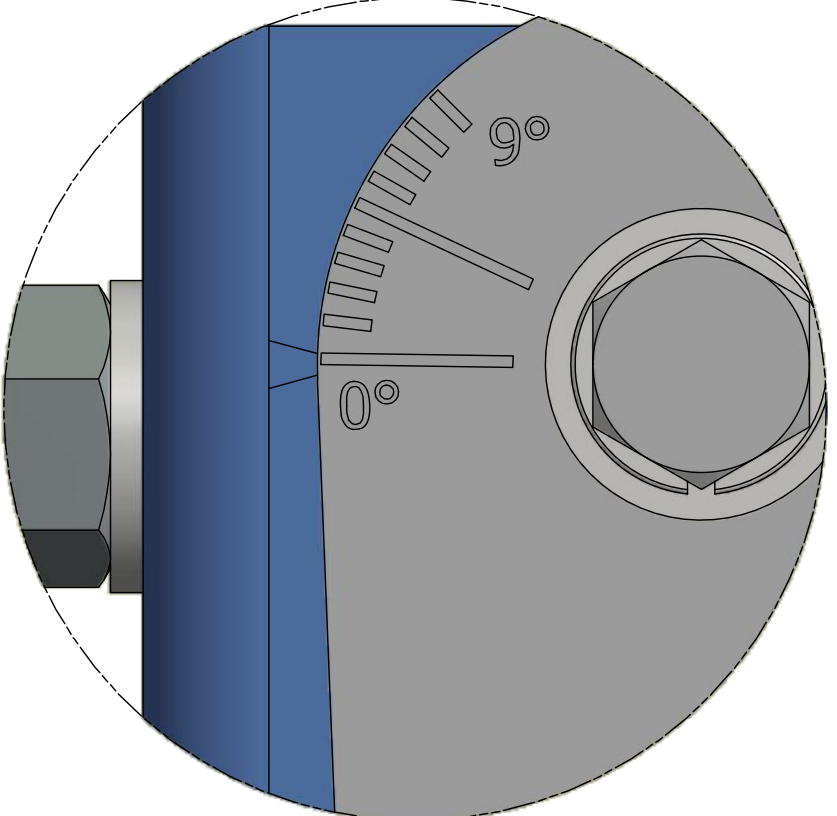


919046 BRACKET KIT, INSTALLATION, 2-POINT, 9DEG D-TILT

- NOTES:**
1. All hardware to be torqued to 15 ft-lbs after mechanical downtilt is set.
 2. See Detail "C" for pole alignment instruction.
 3. The bracket kit includes galvanized hardware and a set of SST nuts. SST nuts must be used on antenna-side brackets that attaches to the antenna as shown.



Must USE SST Nuts to attach Antenna-side brackets to the Housing. (4 PL)



DETAIL C

PRIOR TO MOUNTING THE ANTENNA TO THE POLE:
- ALIGN TICK MARK ON BRACKET TO 0° LINE OF LINKAGE ARM AND TIGHTEN HARDWARE. THIS WILL ASSURE PROPER ALIGNMENT OF BRACKET TO POLE.

UNLESS OTHERWISE SPECIFIED DIMENSIONS ARE IN INCHES TOLERANCES ON .XXXX ±.005 .XX ±.02 .XXX ±.010 .X ±.1 ANGLES ±.5°	NAME	DATE	CSS ANTENNA, INC. 2206-D LAKESIDE BLVD EDGEWOOD, MARYLAND 21040 410-612-0080 FAX: 410-612-0336
	DRAWN K.MILLER	9/19/2012	
THIRD ANGLE PROJECTION	CHECKED		TITLE INSTALLATION INSTRUCTIONS
	APPROVED		SIZE DWG NO. D 819046-ID
THIS DRAWING AND THE INFORMATION CONTAINED HEREIN ARE THE PROPERTY OF CSS ANTENNA, INC. AND SHALL NOT BE REPRODUCED OR USED IN ANY WAY WITHOUT WRITTEN PERMISSION		SCALE	REV 1 OF 1